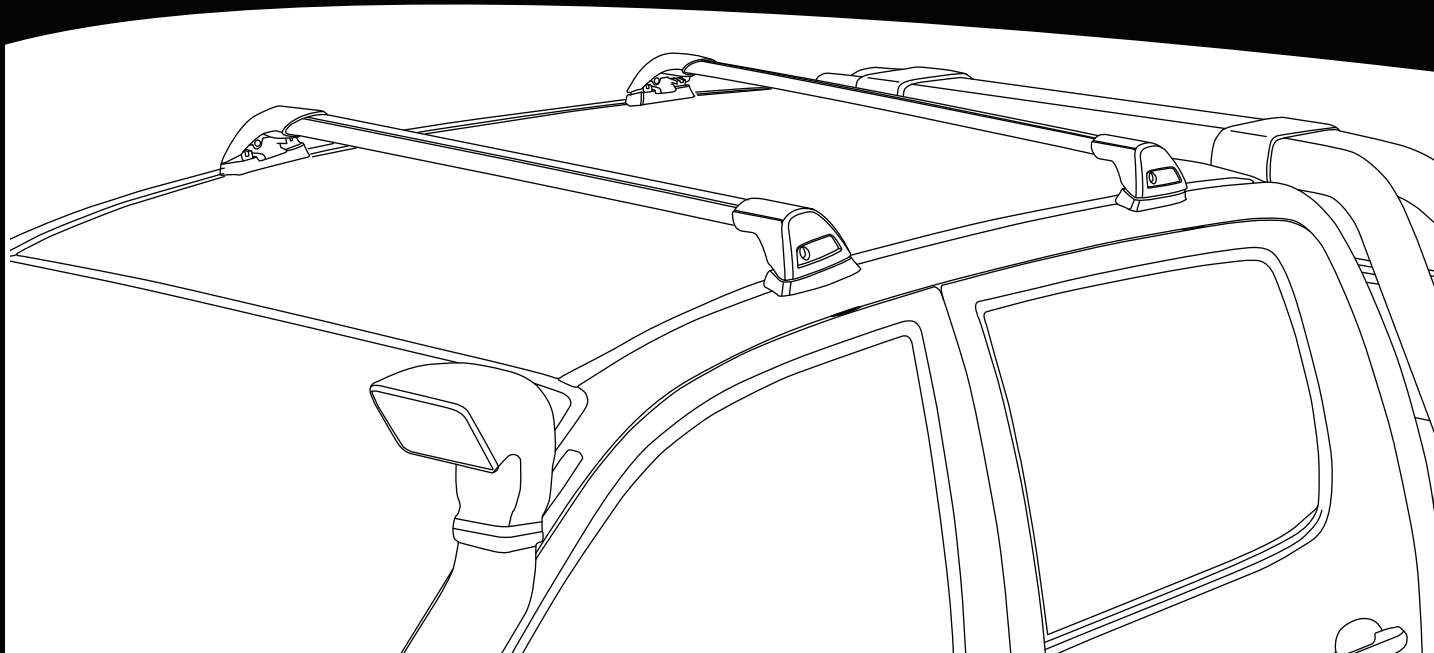


K671



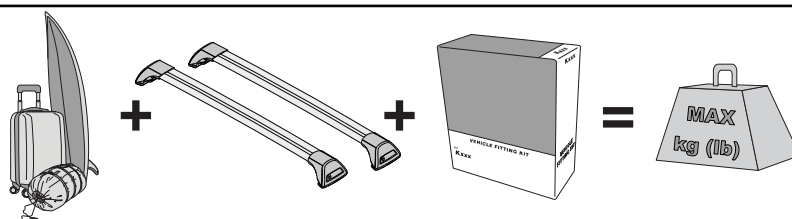
Instructions




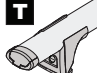
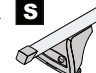


CAUTION: Professional installation recommended • ACHTUNG: Installation nur durch qualifizierten Fachmann • PRECAUCIÓN: Sólo instalación profesional • ATTENTION : Installation professionnelle obligatoire • ADVARSEL: Kun profesjonell montering • CUIDADO: Instalação feita apenas por profissionais • ВНИМАНИЕ! Необходима профессиональная инсталляция • ATTENZIONE: Solo per installazione professionale • UWAGA: Montaż musi być przeprowadzony przez specjalistę • UPOZORNĚNÍ: Je nutná odborná montáž • UPOZORNENIE: Potrebná odborná montáž • WAARSCHUWING: Montage uitsluitend door een vakman • VARNING: Installeras av fackman • ОПМÆRKSOMHED: Professionel installation anbefales • УВАГА: рекомендується професійна установка • HUOMIO: Ammattimaista asennusta suositellaan



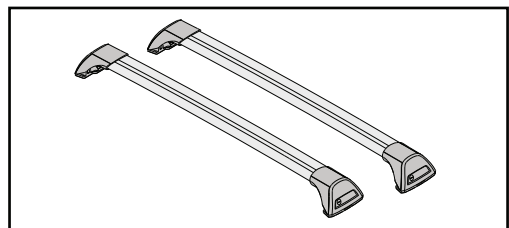
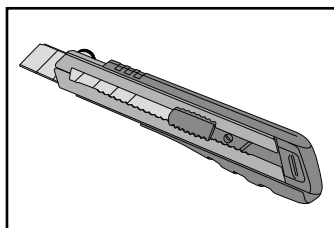
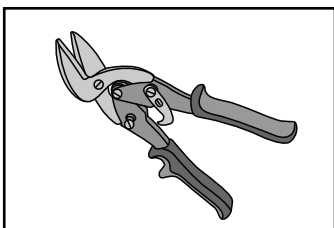
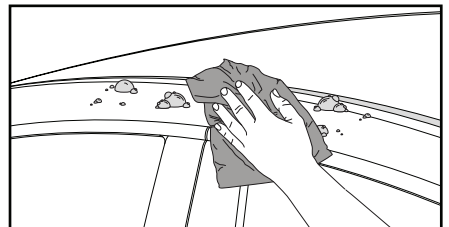
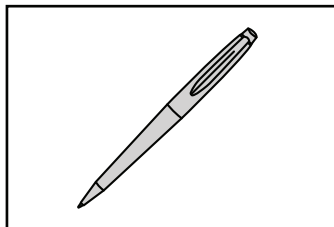
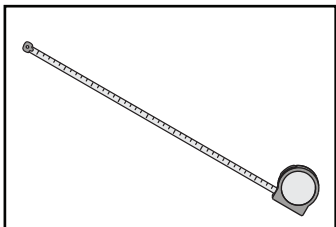
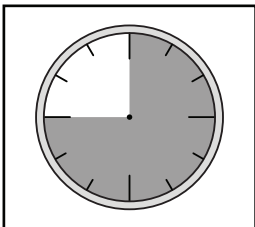
- EN** ALWAYS REFER TO OUR WEBSITE FOR THE LATEST VERSION OF INSTRUCTIONS.
DE BESUCHEN SIE IMMER UNSERE WEBSITES, UM DIE NEUESTE VERSION DER ANWEISUNGEN ZU ERHALTEN.
ES CONSULTE NUESTRAS PÁGINAS WEB PARA VER LA ÚLTIMA VERSIÓN DE LAS INSTRUCCIONES.
FR RÉFÉREZ VOUS TOUJOURS À NOS SITES INTERNET POUR CONSULTER LA DERNIÈRE VERSION DES INSTRUCTIONS.
NO DEN NYESTE VERSJONEN AV INSTRUKSJONENE ER ALLTID TILGJENGELIG PÅ VÅRE NETTSIDER.
PT CONSULTE SEMPRE OS NOSSOS WEBSITES PARA OBTER A MAIS RECENTE VERSÃO DAS INSTRUÇÕES.
RU АКТУАЛЬНАЯ ВЕРСИЯ ИНСТРУКЦИИ ДОСТУПНА НА НАШЕМ САЙТЕ.
IT FARE SEMPRE RIFERIMENTO AI NOSTRI SITI WEB PER L'ULTIMA VERSIONE DELLE ISTRUZIONI.
PL ZAWSZE SPRAWDZAJ NASZĄ STRONĘ INTERNETOWĄ, ABY UZYSKAĆ NAJNOWSZĄ WERSJĘ INSTRUKCJI.
CS NEJNOVĚJŠÍ VERZI POKYNŮ VŽDY NAJDETE NA NAŠÍ WEBOVÉ STRÁNCE.
SK POSLEDNÚ VERZIU POKYNOV VŽDY NÁJDETE NA NAŠICH WEBOVÝCH STRÁNKACH.
NL RAADPLEEG ALTIJD ONZE WEBSITES VOOR DE MEEST RECENTE VERSIE VAN DE INSTRUCTIES.
SV SE ALLTID VÅRA WEBBPLATSER FÖR DEN SENASTE VERSIONEN AV INSTRUKTIONERNA.
DK DEN NYESTE VERSION AF VEJLEDNINGERNE ER ALTID TILGÆNGELIG PÅ VORES HJEMMESIDER.
UA ОСТАННЯ ВЕРСІЯ ІНСТРУКЦІЇ ЗАВЖДИ ДОСТУПНА НА НАШОМУ САЙТІ.
FI KATSO AINA VERKKOSIVUSTOILTAMME UUSIN VERSIO OHJEISTA.

MAX kg (lb)

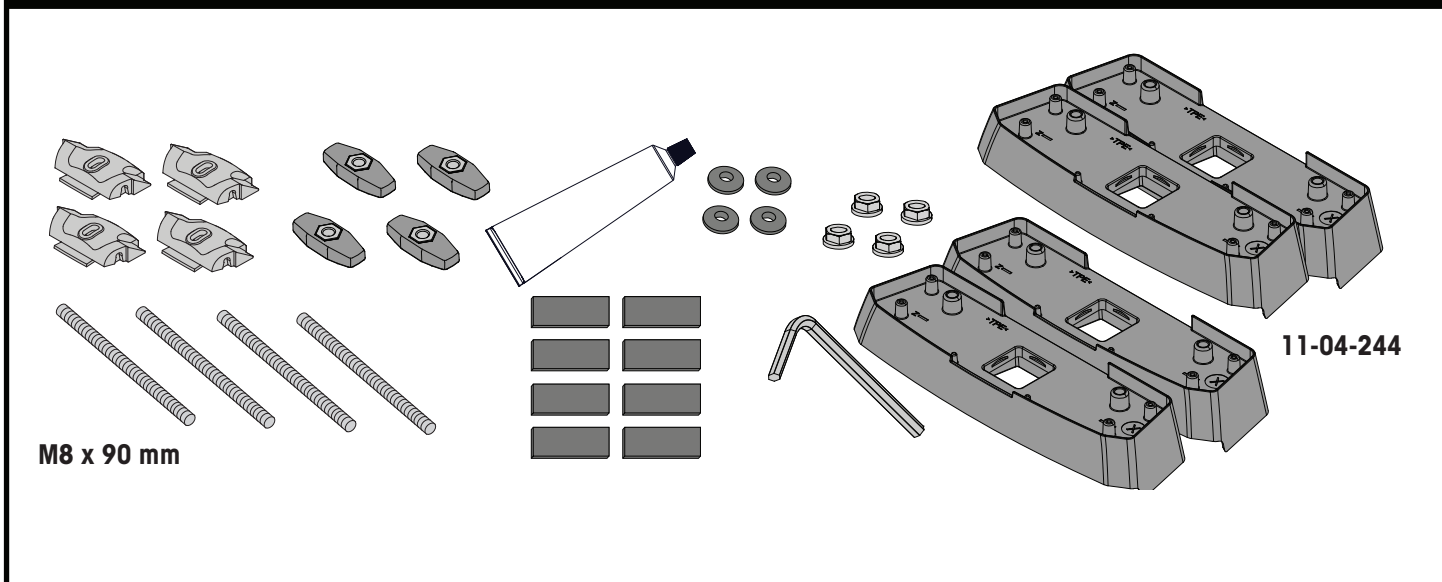


		F  T  S 	HD  THD 
Holden Colorado Crew Cab, 4dr Ute 12-Aug 16	AU, NZ	75 kg (165 lb)	100 kg (220 lb)
Holden Colorado Crew Cab, 4dr Ute Sep 16-20	AU, NZ	75 kg (165 lb)	100 kg (220 lb)
Chevrolet Colorado Crew Cab, 4dr Ute 13+	EU	75 kg (165 lb)	100 kg (220 lb)
Isuzu D-Max Double Cab, 4dr Ute 12-Apr 17	EU	75 kg (165 lb)	100 kg (220 lb)
Isuzu D-Max Double Cab, 4dr Ute 17-19	EU	75 kg (165 lb)	100 kg (220 lb)
Isuzu D-Max SX/LS-U/LS-M Double Cab, 4dr Ute 20+	EU	75 kg (165 lb)	100 kg (220 lb)
Isuzu D-Max SX/LS-U/LS-M Double Cab, 4dr Ute Oct 20+	NZ	75 kg (165 lb)	100 kg (220 lb)
Isuzu D-Max LS-U/LS-M Crew Cab, 4dr Ute 12-Apr 17	AU, NZ	75 kg (165 lb)	100 kg (220 lb)
Isuzu D-Max LS-U/LS-M Crew Cab, 4dr Ute May 17-Aug 20	AU	75 kg (165 lb)	100 kg (220 lb)
Isuzu D-Max LS-U/LS-M Crew Cab, 4dr Ute May 17-Sep 20	NZ	75 kg (165 lb)	100 kg (220 lb)
Isuzu D-Max SX/LS-U/LS-M Crew Cab, 4dr Ute Sep 20+	AU	75 kg (165 lb)	100 kg (220 lb)
Isuzu KB Double Cab, 4dr Ute 13-Apr 17	ZA	75 kg (165 lb)	100 kg (220 lb)
Isuzu KB Double Cab, 4dr Ute May 17+	ZA	75 kg (165 lb)	100 kg (220 lb)
Mazda BT-50 Dual Cab, 4dr Ute Oct 20+	AU, NZ	75 kg (165 lb)	100 kg (220 lb)
Mazda BT-50 Dual Cab, 4dr Ute 20+	ZA	75 kg (165 lb)	100 kg (220 lb)

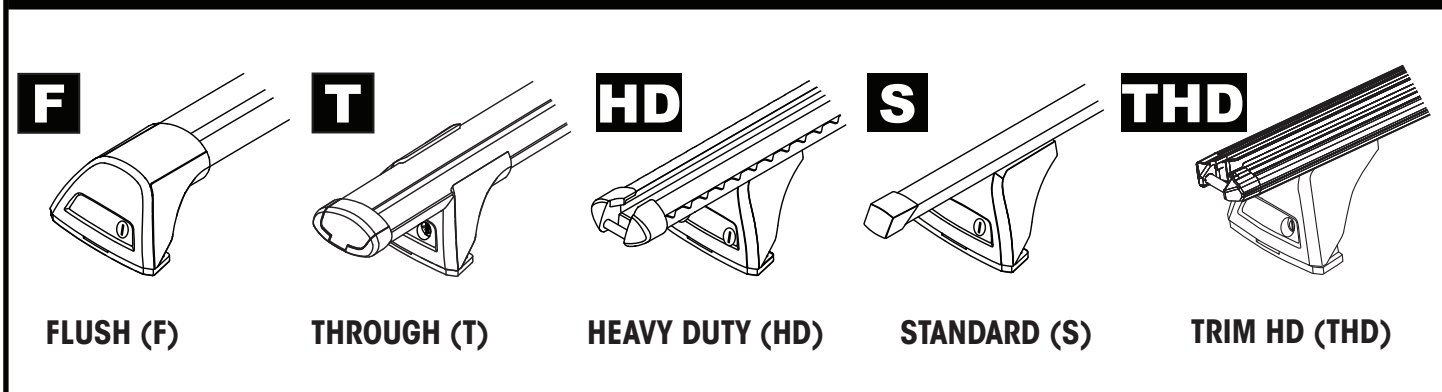
**REQUIRED • ERFORDERLICH • REQUERIDOS • OBLIGATOIRE • NØDVENDIG • NECESSÁRIO • ОБЯЗАТЕЛЬНО • OBLIGATORIO
POTRZEBY • NEVYHNUTELNÉ • NEVYHNUTNÉ • NODIG • NØDVÄNDIG • PÅKRÆVET • ПОТРІБНА • EDellyTETÄÄN**



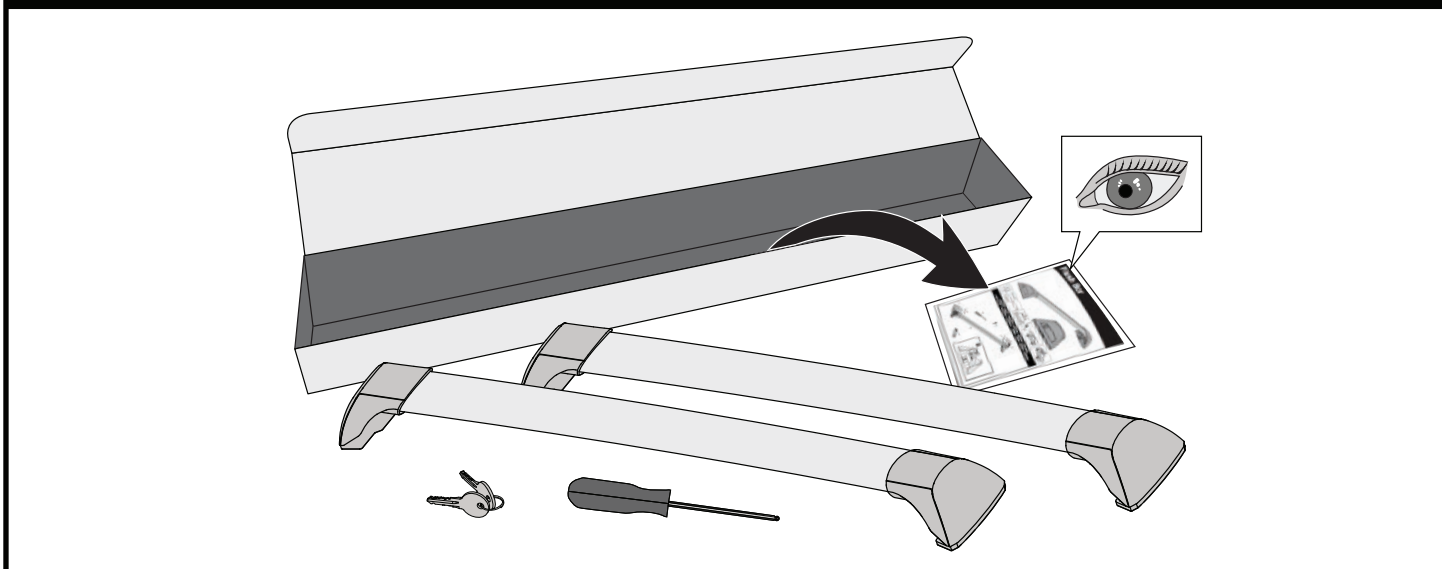
CONTENTS • INHALT • CONTENIDO • CONTENU • INNHOLD • CONTEÚDO • СОДЕРЖАНИЕ • CONTENUTO
 ZAWARTOŚĆ • OBSAH • OBSAH • INHOUD • INNEHÅLL • INDHOLD • ЗМІСТ • SISÄLLYS

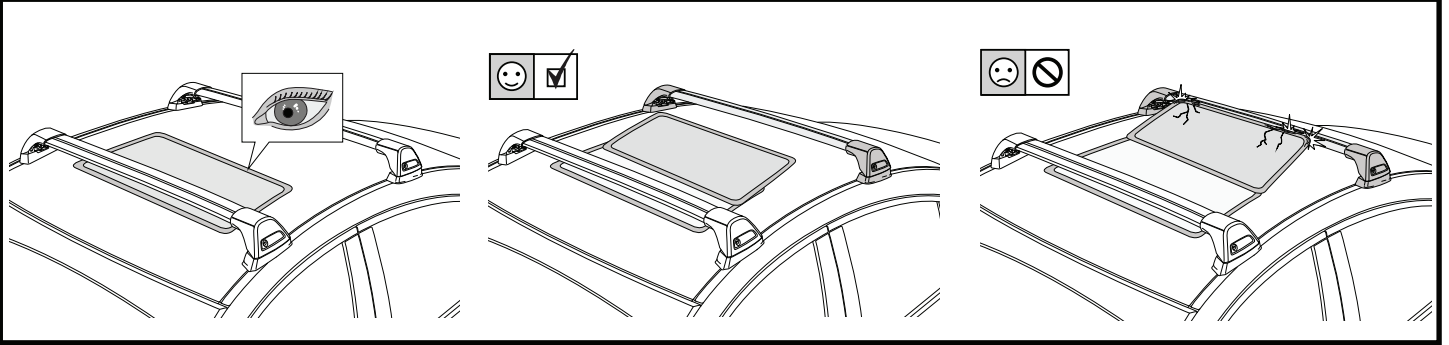


COMPATIBLE WITH • KOMPATIBEL MIT • COMPATIBLE CON • COMPATIBLE AVEC • KOMPATIBEL MED
 • COMPATÍVEL COM • СОВМЕСТИМ С • COMPATIBLE CON • KOMPATYBILNY Z • KOMPATIBILNÍ S
 • KOMPATIBILNÉ S • COMPATIBLE MET • KOMPATIBEL MED • KOMPATIBEL MED • СУМІСНИЙ З •
 YHTEENSOPIVA

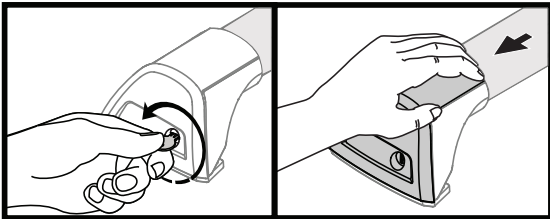


ATTENTION • ACHTUNG • ATENCIÓN • ATTENTION • OPPMERKSOMHET • ATENÇÃO • ВНИМАНИЕ • ATTENZIONE
 UWAGA • UPOZORNĚNÍ • UPOZORNENIE • LET OP • UPPMÄRKSAMHET • ОРМÆRKSOMHED • УВАГА • HUOMIO

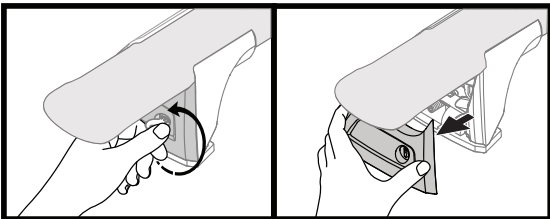
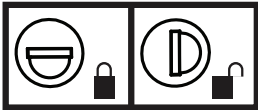




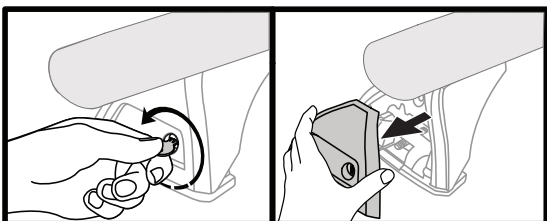
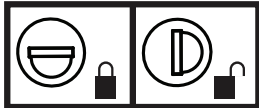
1



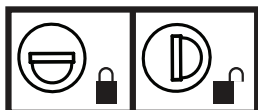
F



T



HD

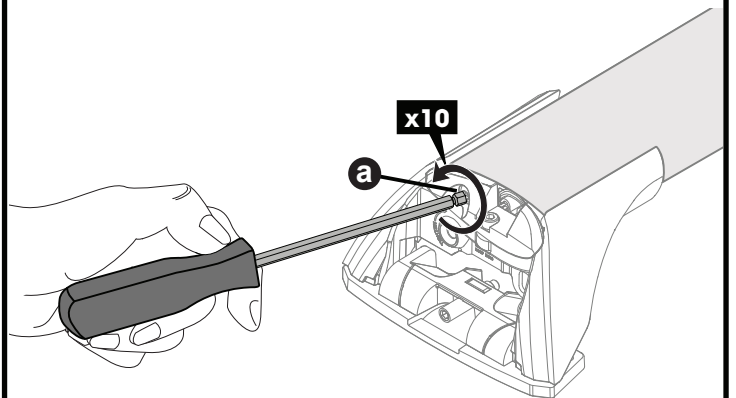
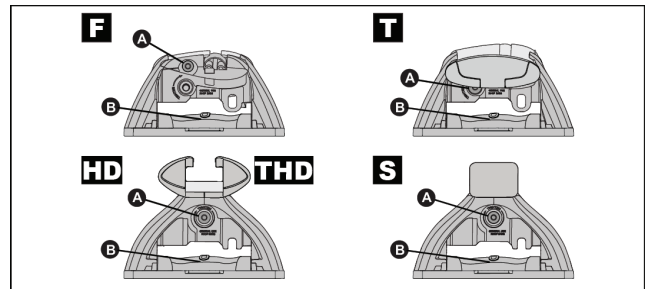
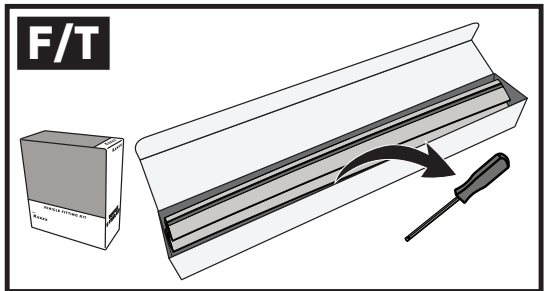
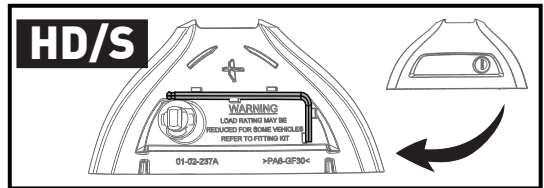


S

THD

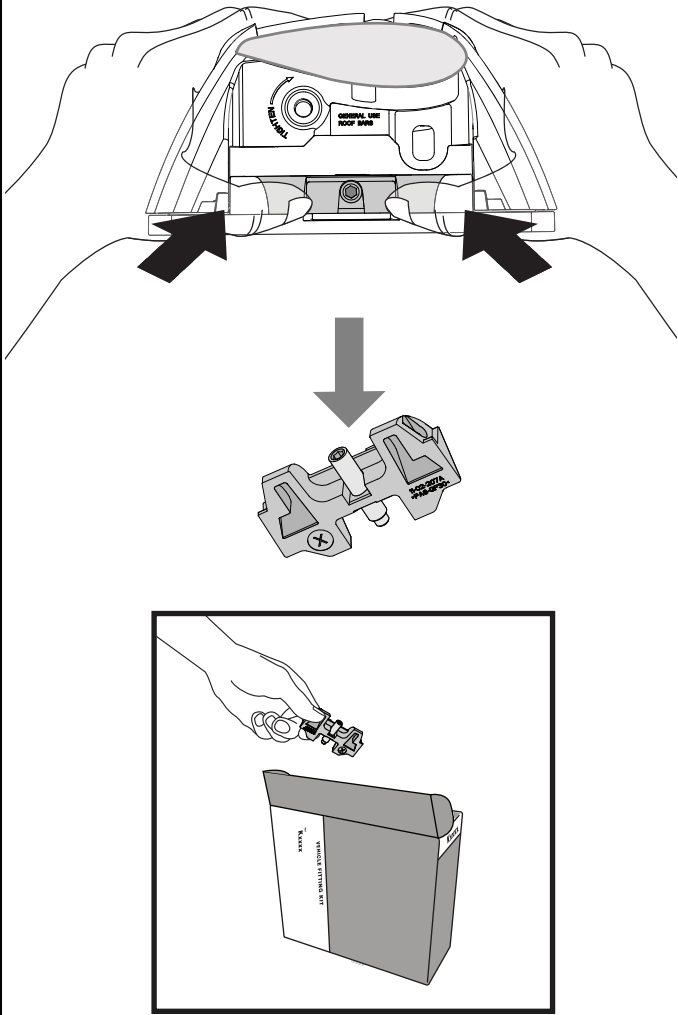
x4

2



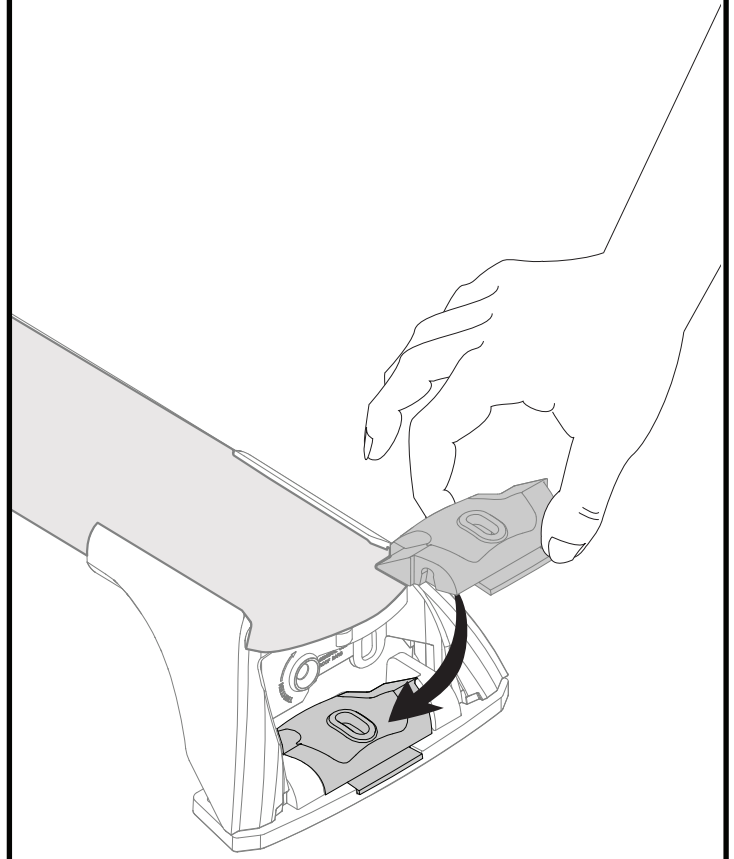
x4

3



x4

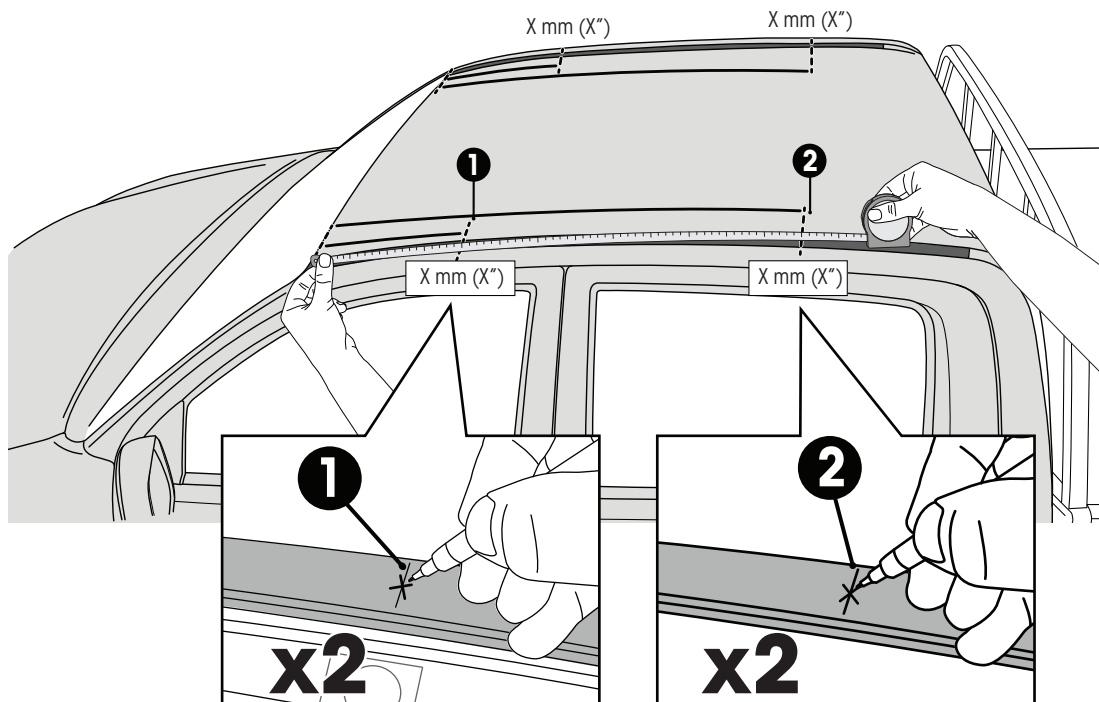
4

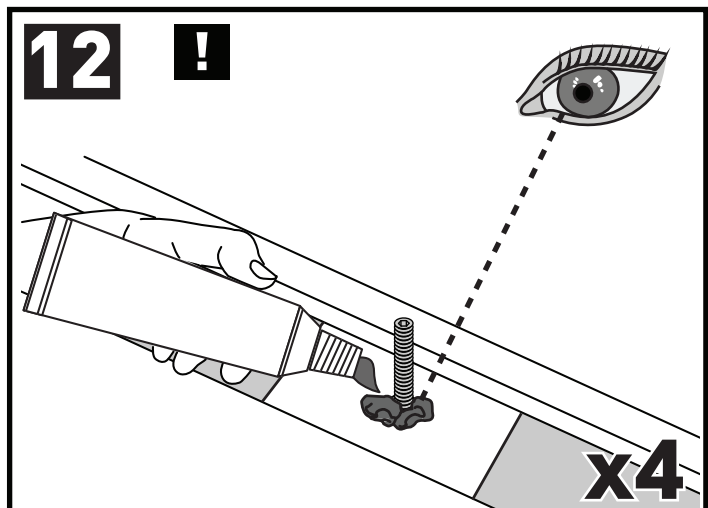
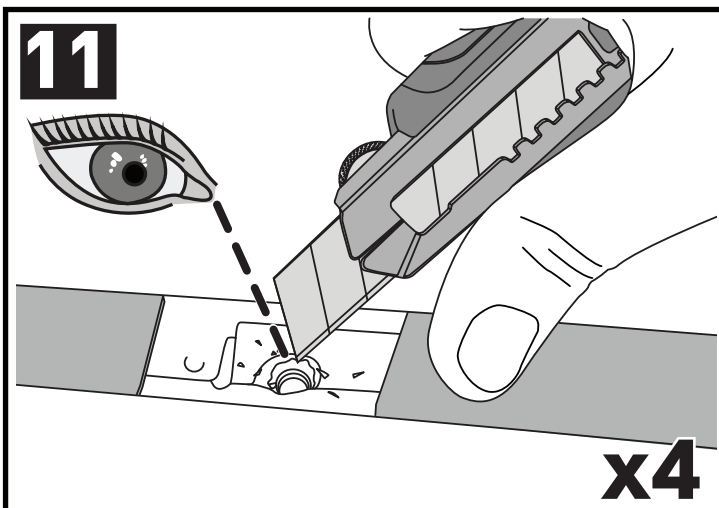
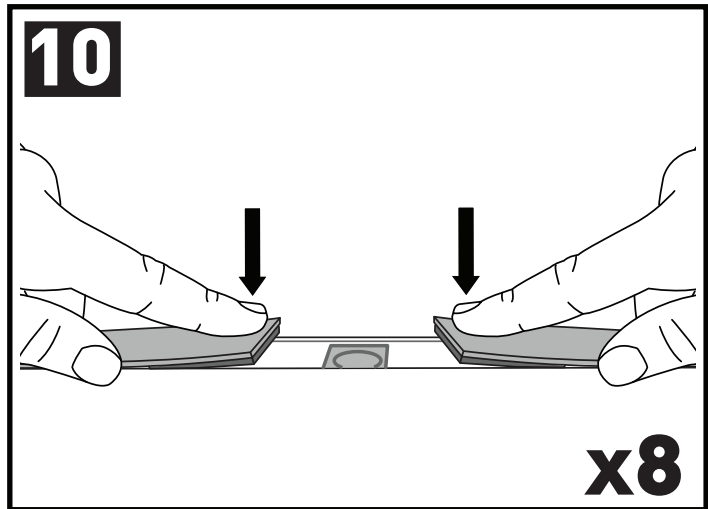
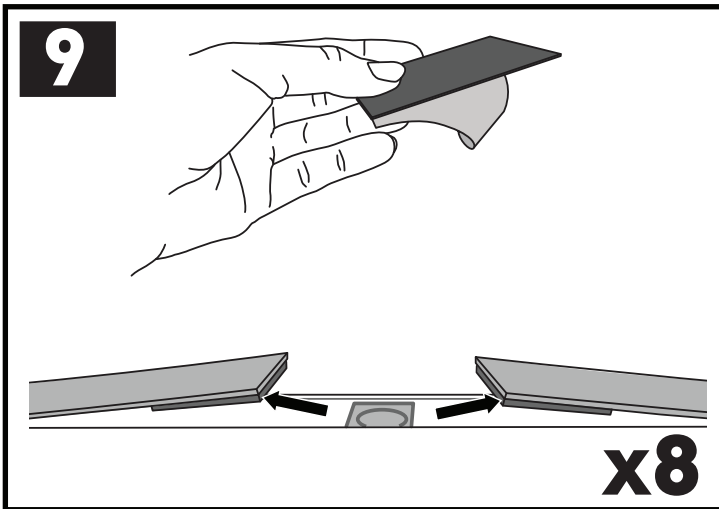
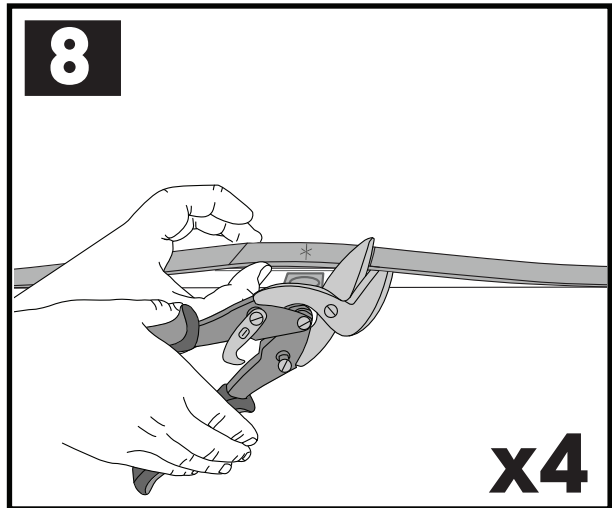
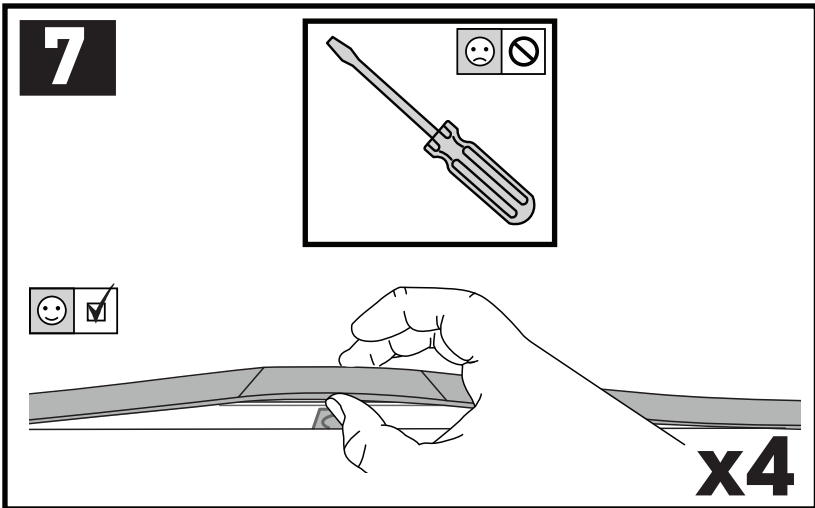
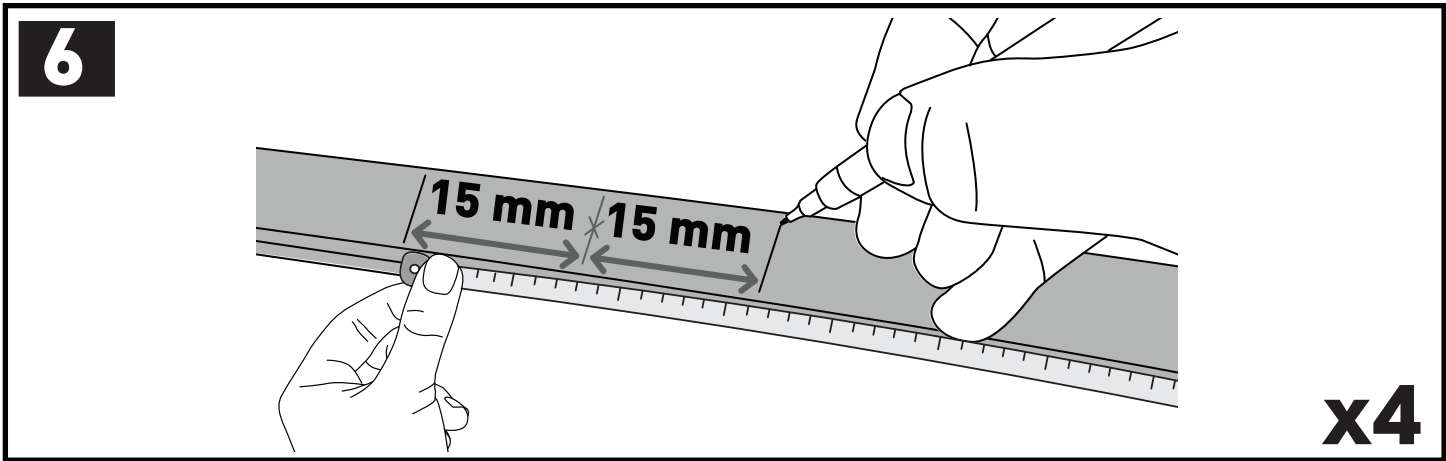


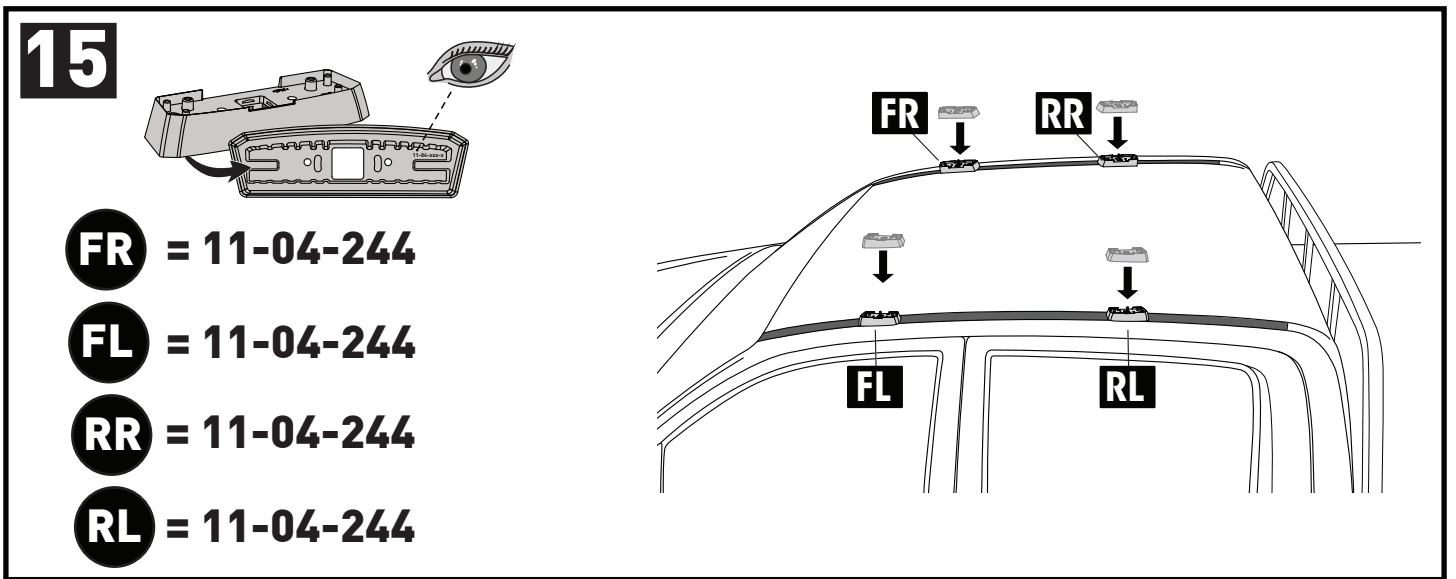
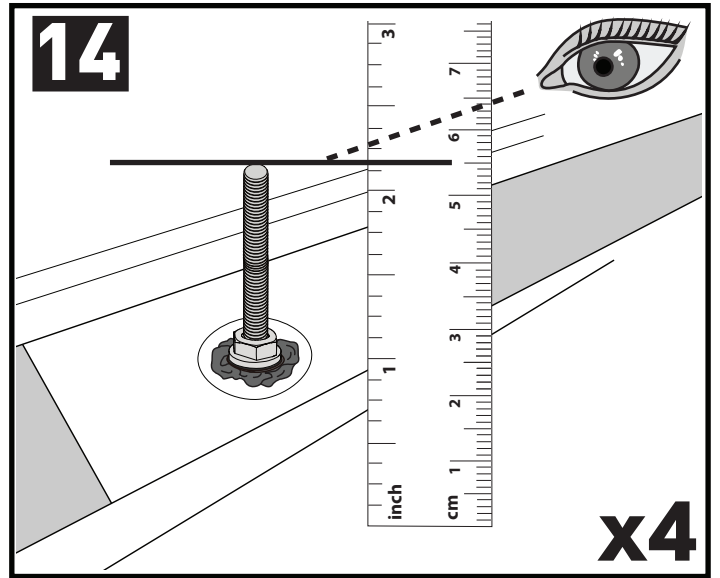
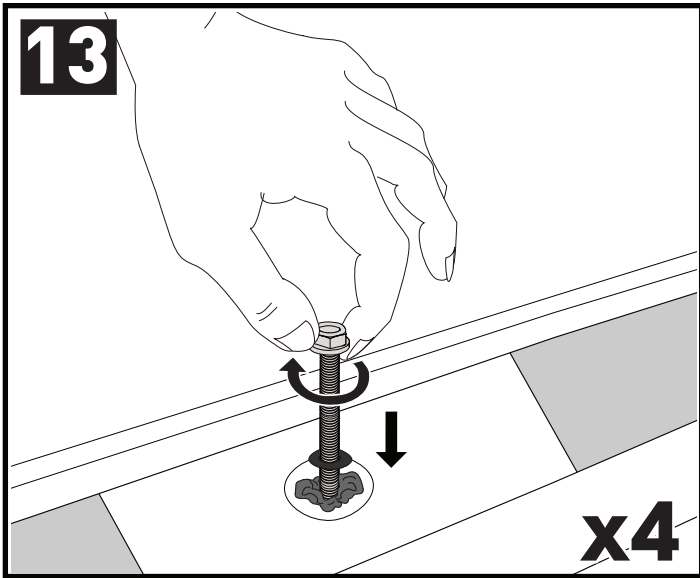
x4

5

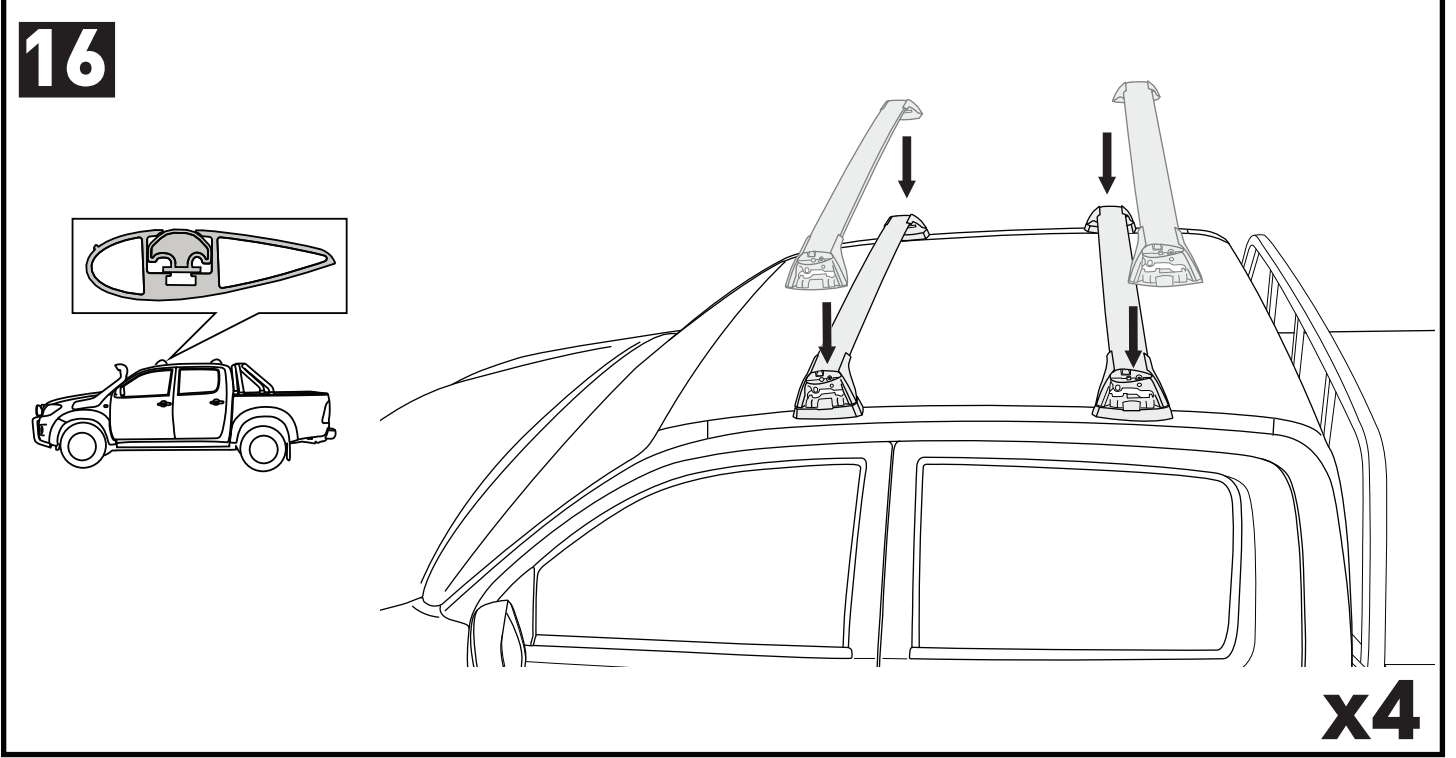
		1	2
Holden Colorado Crew Cab, 4dr Ute 12-Aug 16	AU, NZ	X = 365 mm (14 3/8")	X = 1260 mm (49 5/8")
Holden Colorado Crew Cab, 4dr Ute Sep 16-20	AU, NZ	X = 365 mm (14 3/8")	X = 1260 mm (49 5/8")
Chevrolet Colorado Crew Cab, 4dr Ute 13+	EU	X = 365 mm (14 3/8")	X = 1260 mm (49 5/8")
Isuzu D-Max Double Cab 4dr Ute 12-Apr 17	EU	X = 365 mm (14 3/8")	X = 1260 mm (49 5/8")
Isuzu D-Max Double Cab 4dr Ute 17-19	EU	X = 365 mm (14 3/8")	X = 1260 mm (49 5/8")
Isuzu D-Max SX/LS-U/LS-M Double Cab, 4dr Ute 20+	EU	X = 385 mm (15 1/8")	X = 1290 mm (50 3/4")
Isuzu D-Max LS-U/LS-M Crew Cab, 4dr Ute 12-Apr 17	AU, NZ	X = 365 mm (14 3/8")	X = 1260 mm (49 5/8")
Isuzu D-Max LS-U/LS-M Crew Cab, 4dr Ute May 17-Aug 20	AU	X = 365 mm (14 3/8")	X = 1260 mm (49 5/8")
Isuzu D-Max LS-U/LS-M Crew Cab, 4dr Ute May 17+	NZ	X = 365 mm (14 3/8")	X = 1260 mm (49 5/8")
Isuzu D-Max SX/LS-U/LS-M Crew Cab, 4dr Ute Sep 20+	AU	X = 385 mm (15 1/8")	X = 1290 mm (50 3/4")
Isuzu KB Double Cab, 4dr Ute 13-Apr 17	ZA	X = 365 mm (14 3/8")	X = 1260 mm (49 5/8")
Isuzu KB Double Cab, 4dr Ute May 17+	ZA	X = 365 mm (14 3/8")	X = 1260 mm (49 5/8")
Mazda BT-50 Dual Cab, 4dr Ute Oct 20+	AU, NZ	X = 385 mm (15 1/8")	X = 1290 mm (50 3/4")
Mazda BT-50 Dual Cab, 4dr Ute 20+	ZA	X = 385 mm (15 1/8")	X = 1290 mm (50 3/4")



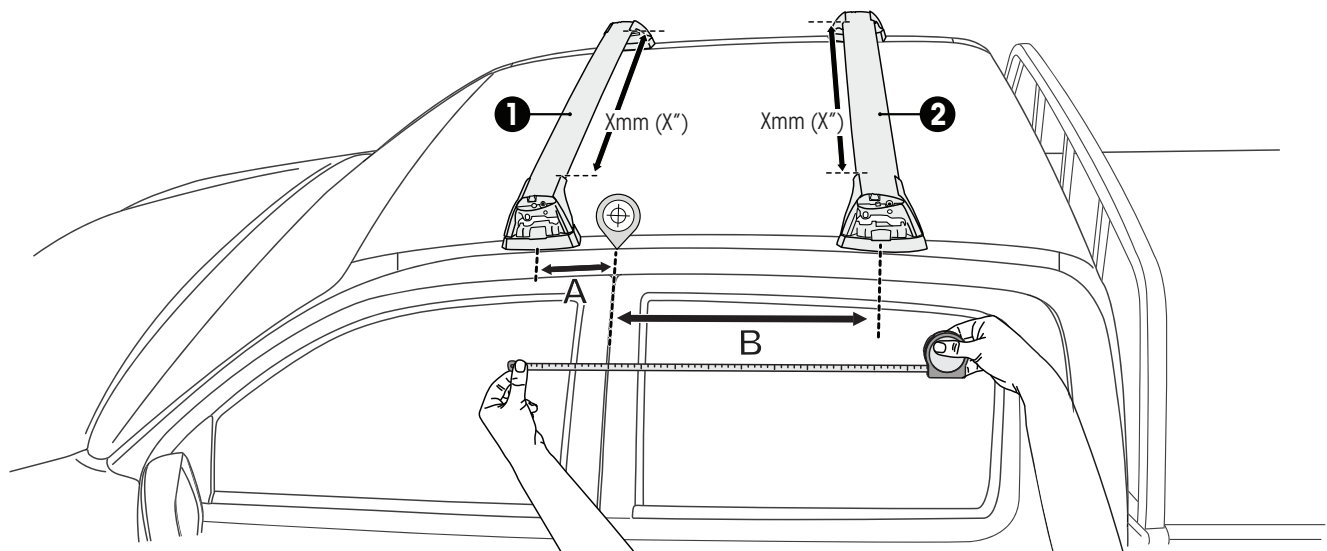
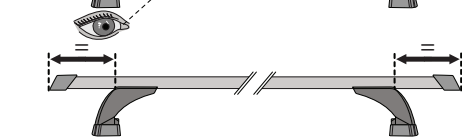
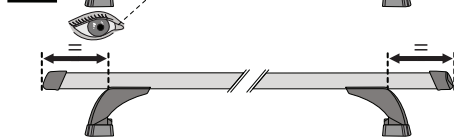
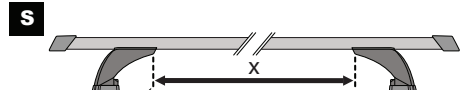
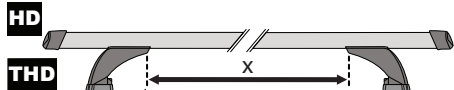
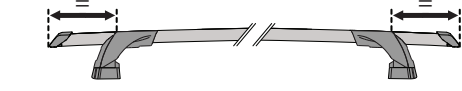
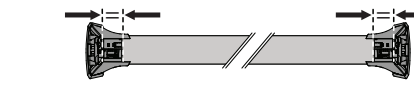
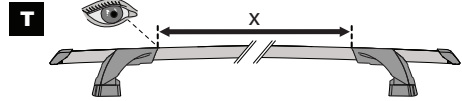
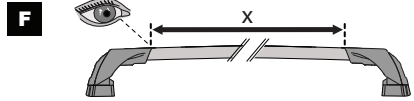
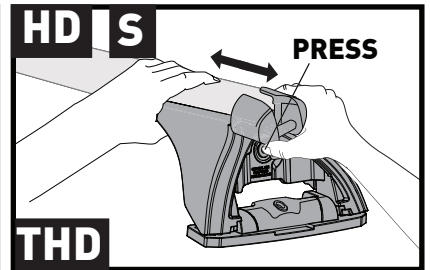
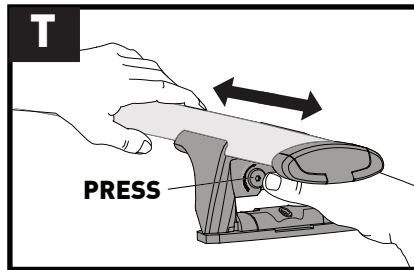
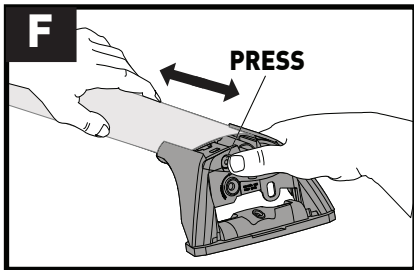






PLACEMENT • PLATZIERUNG • COLOCACIÓN • MONTAGE • PLASSERING • COLOCAÇÃO • РАЗМЕЩЕНИЕ • MONTAGGIO
 UMIESZCZENIE • UMÍSTĚNÍ • UMIESTNENIE • PLAATSING • PLACERING • PLACERING • РОЗМІЩЕННЯ • SIJOITTA



17

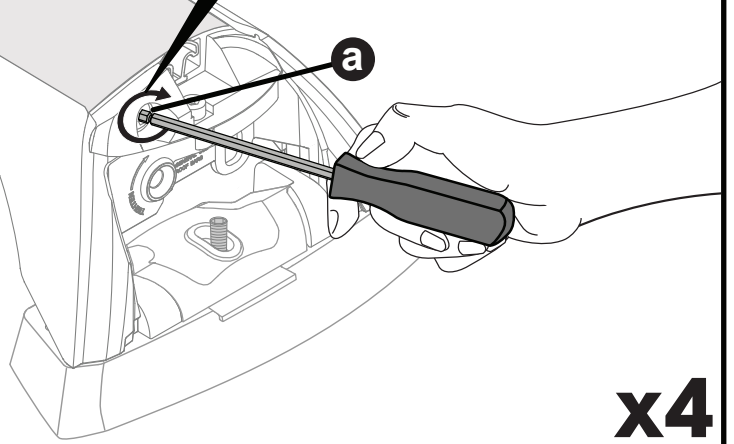
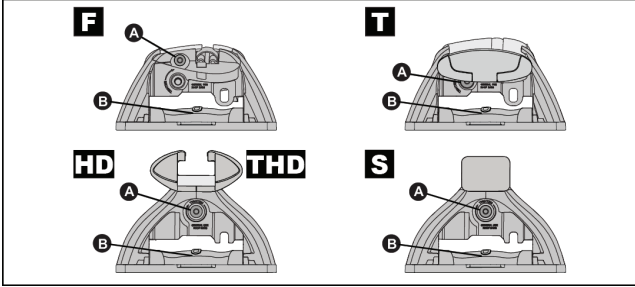


		1	2
Holden Colorado Crew Cab, 4dr Ute 12-Aug 16	AU, NZ	X = 905 mm (35 5/8")	X = 885 mm (34 7/8")
Holden Colorado Crew Cab, 4dr Ute Sep 16-20	AU, NZ	X = 905 mm (35 5/8")	X = 885 mm (34 7/8")
Chevrolet Colorado Crew Cab, 4dr Ute 13+	EU	X = 905 mm (35 5/8")	X = 885 mm (34 7/8")
Isuzu D-Max Double Cab 4dr Ute 12-Apr 17	EU	X = 905 mm (35 5/8")	X = 885 mm (34 7/8")
Isuzu D-Max Double Cab 4dr Ute 17-19	EU	X = 910 mm (35 7/8")	X = 895 mm (35 1/4")
Isuzu D-Max SX/LS-U/LS-M Double Cab, 4dr Ute 20+	EU	X = 920 mm (36 1/2")	X = 920 mm (36 1/2")
Isuzu D-Max SX/LS-U/LS-M Double Cab, 4dr Ute Oct 20+	NZ	X = 920 mm (36 1/2")	X = 920 mm (36 1/2")
Isuzu D-Max LS-U/LS-M Crew Cab, 4dr Ute 12-Apr 17	AU, NZ	X = 905 mm (35 5/8")	X = 885 mm (34 7/8")
Isuzu D-Max LS-U/LS-M Crew Cab, 4dr Ute May 17-Aug 20	AU	X = 910 mm (35 7/8")	X = 895 mm (35 1/4")
Isuzu D-Max LS-U/LS-M Crew Cab, 4dr Ute May 17-Sep 20	NZ	X = 910 mm (35 7/8")	X = 895 mm (35 1/4")
Isuzu D-Max SX/LS-U/LS-M Crew Cab, 4dr Ute Sep 20+	AU	X = 920 mm (36 1/2")	X = 920 mm (36 1/2")
Isuzu KB Double Cab, 4dr Ute 13-Apr 17	ZA	X = 905 mm (35 5/8")	X = 885 mm (34 7/8")
Isuzu KB Double Cab, 4dr Ute May 17+	ZA	X = 910 mm (35 7/8")	X = 895 mm (35 1/4")
Mazda BT-50 Dual Cab, 4dr Ute Oct 20+	AU, NZ	X = 920 mm (36 1/2")	X = 920 mm (36 1/2")
Mazda BT-50 Dual Cab, 4dr Ute 20+	ZA	X = 920 mm (36 1/2")	X = 920 mm (36 1/2")

18

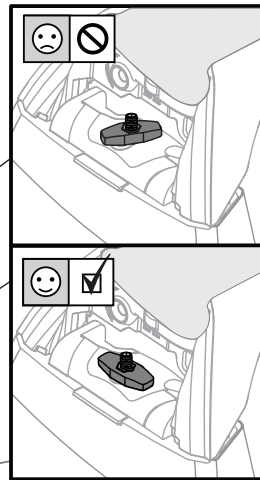
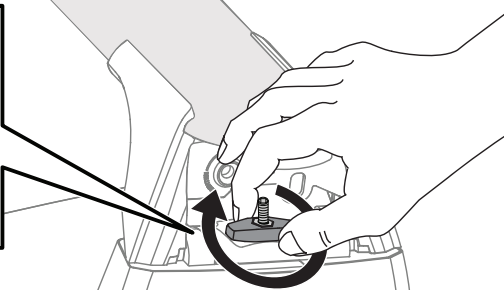
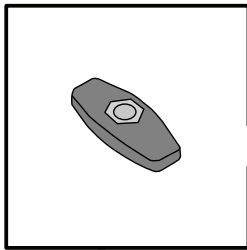
2 Nm
(18 lb-in)

a



x4

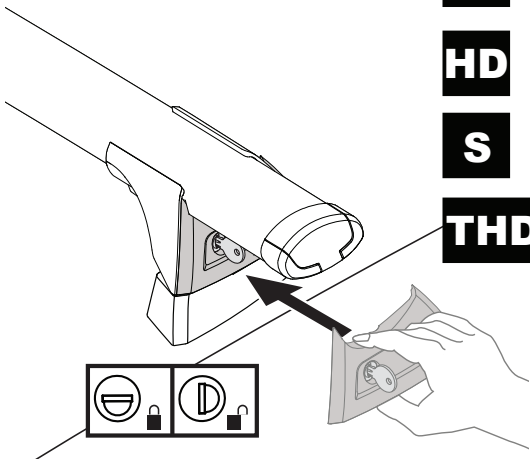
19



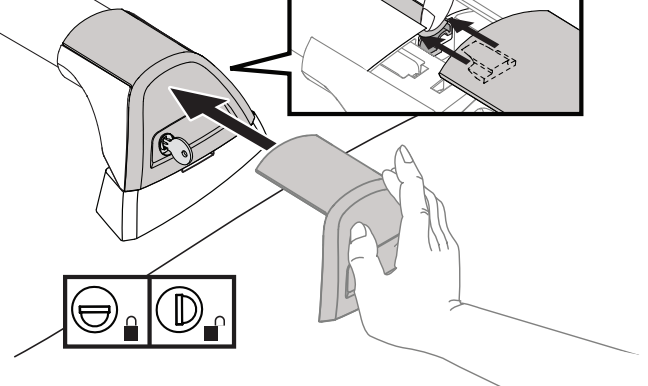
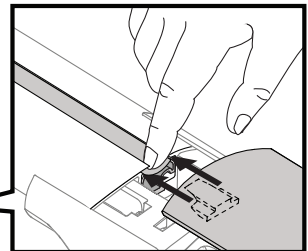
x4

20

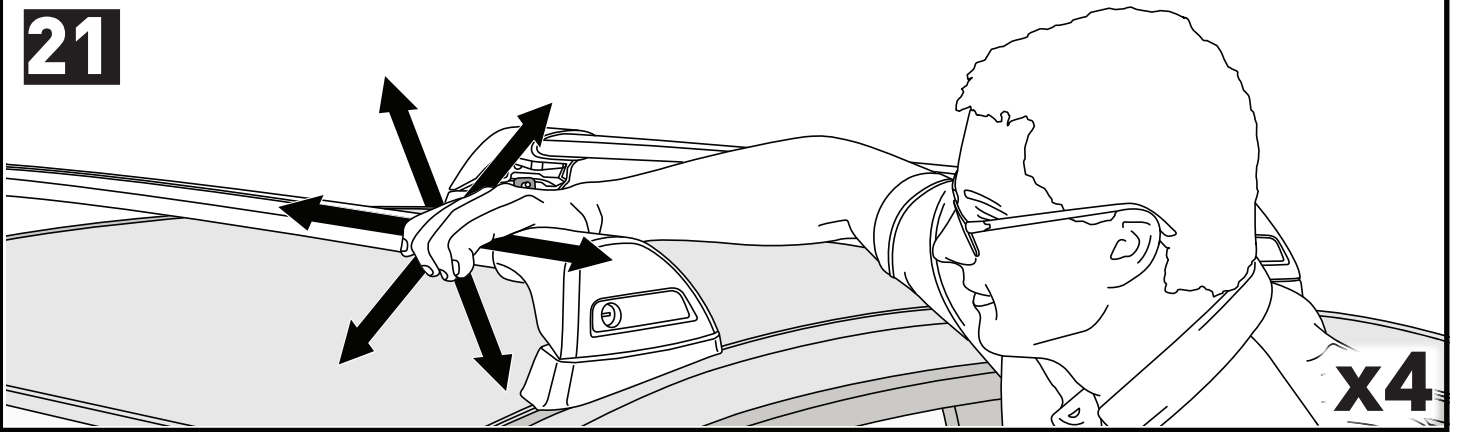
T
HD
S
THD



F

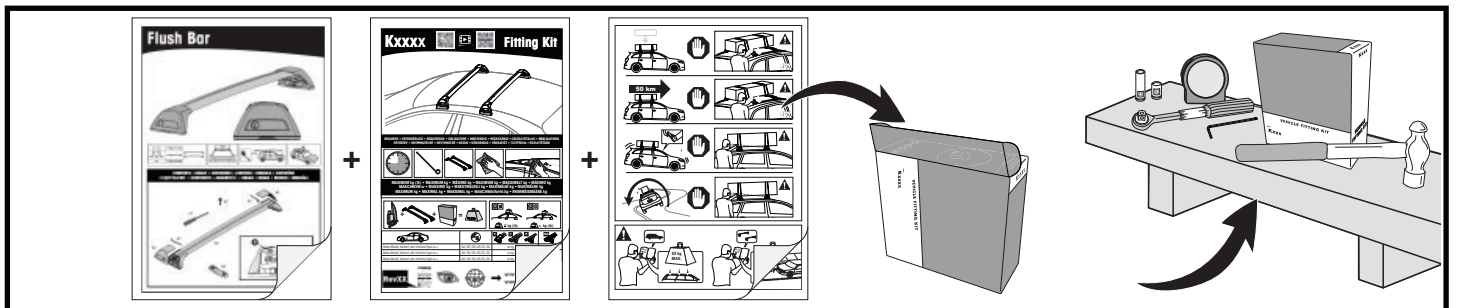
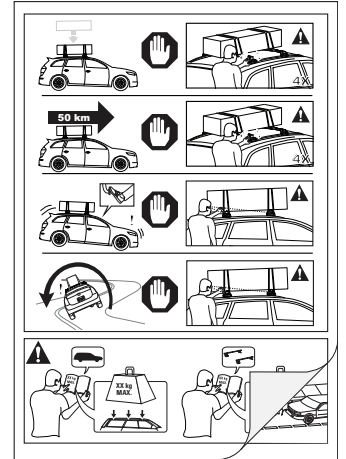


x4

21

**ATTENTION • ACHTUNG • ATENCIÓN • ATTENTION • OPPMERKSOMHET • ATENÇÃO • ВНИМАНИЕ • ATTENZIONE
UWAGA • UPOZORNĚNÍ • UPOZORNENIE • LET OP • UPPMÄRKSAMHET • OPMÆRKSOMHED • УВАГА • HUOMIO**

- EN** Please read safety and warranty booklet included with this product prior to use. For more information visit your local dealer.
- DE** Bitte lesen und beachten Sie die beiliegende Montageanleitung, Sicherheitshinweise und Garantiebedingungen bevor Sie das Produkt montieren/benutzen. Für weitere Informationen kontaktieren Sie bitte Ihren Händler.
- ES** Por favor, lea folleto de seguridad y garantía que se incluye con este producto antes de su uso . Para obtener más información, visite a su distribuidor local.
- FR** Veuillez lire attentivement le manuel de sécurité et de garantie avant utilisation. Pour plus d'informations, visitez votre concessionnaire local.
- NO** Vennligst les hefte om sikkerhet og garanti som er vedlagt dette produkt før det tas i bruk. For mer informasjon ta kontakt med din forhandler.
- PT** Por favor leia o manual de segurança e garantia incluído, antes de utilizar o produto. Para mais informações visite o seu revendedor local.
- RU** Пожалуйста, ознакомьтесь с инструкцией перед тем, как использовать товар. Для получения более подробной информации обратитесь к местному дилеру.
- IT** Si prega di leggere il libretto di sicurezza e garanzia incluso nel prodotto prima dell'uso. Per maggiori informazioni visita il rivenditore locale.
- PL** Proszę zapoznać się z warunkami gwarancji i bezpieczeństwa przed użyciem produktu. W celu uzyskania dodatkowych informacji proszę kontaktować się z najbliższym autoryzowanym punktem sprzedaży.
- CS** Před použitím si prosím přečtěte přiložené informace o bezpečnosti a záručních podmínkách. Pro více informací navštivte nejbližšího dealera.
- SK** Pred použitím si prosím prečítajte priložené informácie o bezpečnosti a záručných podmienkach. Pre viac informácií navštívte najbližšieho diera.
- NL** A.U.B. bijgesloten garantie- en veiligheidsinstructies grondig lezen voor gebruik van dit product. Voor meer informatie gaag contact opnemen met uw dealer.
- SV** Var snäll och läs igenom säkerhets- och garantihäftet som medföljer produkten före användning. För mer information besök din lokala återförsäljare.
- DK** Læs venligst sikkerheds- og garantibogholderen, der følger med dette produkt, inden brug. For mere information besøg din lokale forhandler.
- UA** Будь ласка, ознайомтеся з броюрою безпеки та гарантії, включені до цього продукту перед використанням. Для отримання додаткової інформації відвідайте місцевого дилера.
- FI** Lue tämän tuotteen mukana toimitetut turvallisuus- ja takuu huoltopalvelut ennen käyttöä. Lisätietoja saat paikalliselta jälleenmyyjältä.



ALL CONTENT SUBJECT TO YAKIMA AUSTRALIA PTY LTD COPYRIGHT © 2016

Yakima Australia Pty Ltd
17 Hinkler Court, Brendale
QLD 4500, Australia
1800 143 548
www.prorack.com.au
www.yakima.com.au

Yakima Products, Inc.
4101 Kruse Way
Lake Oswego, OR. 97035 USA
888 925 4621
www.yakima.com

WORKS WITH:
prorack
WHISPBAR
YAKIMA