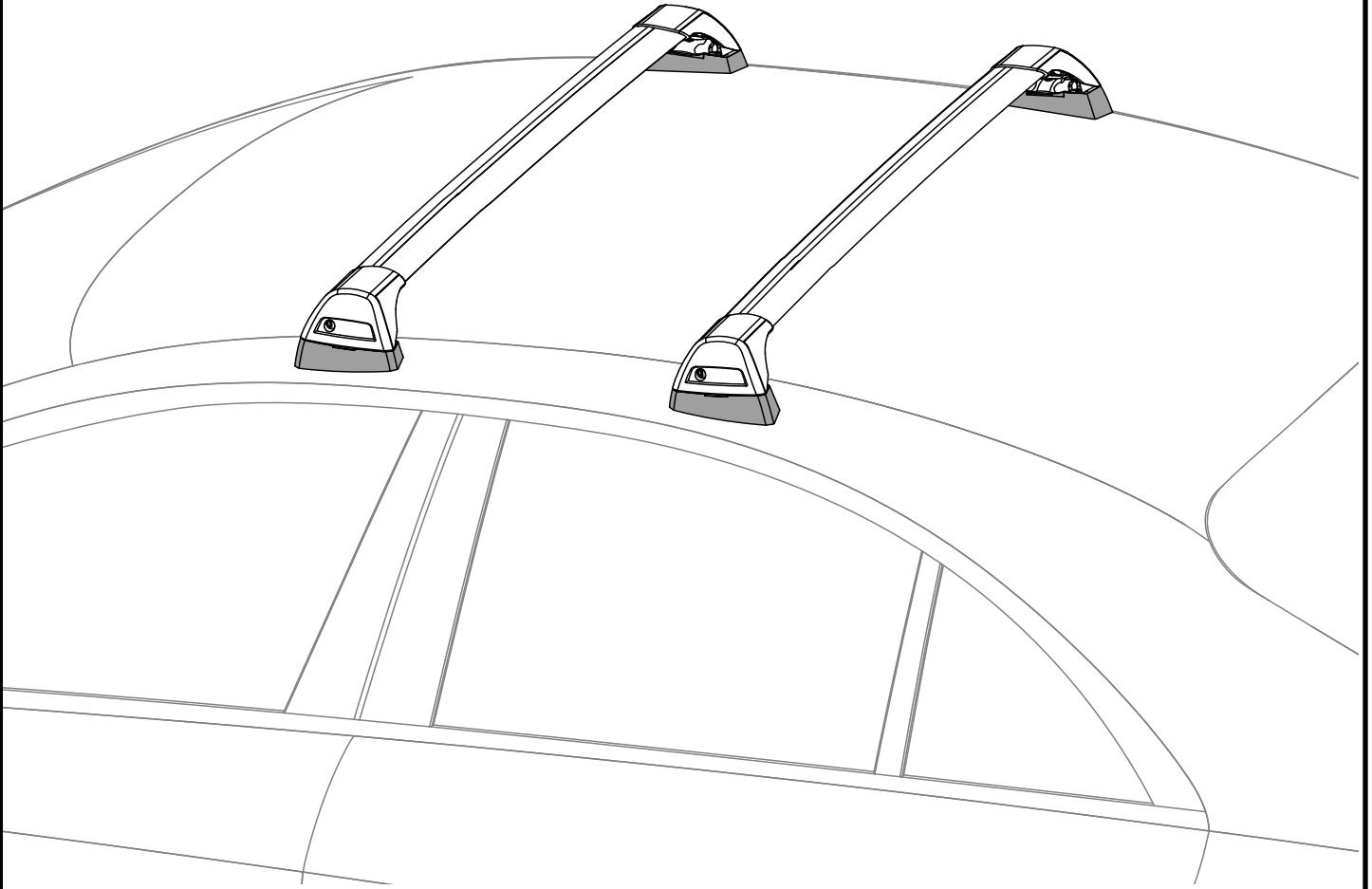
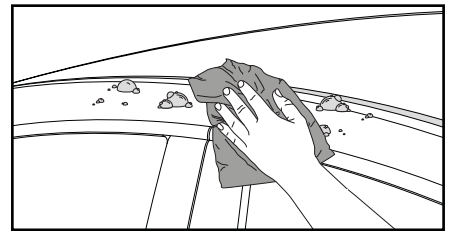
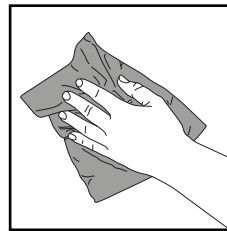
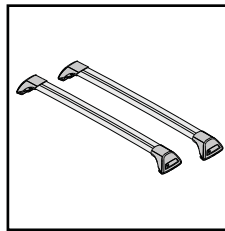
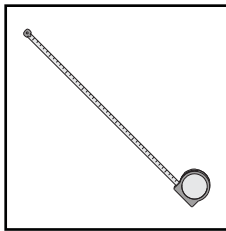
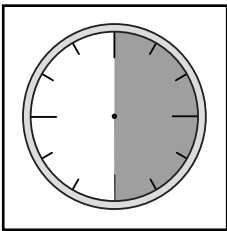


K466

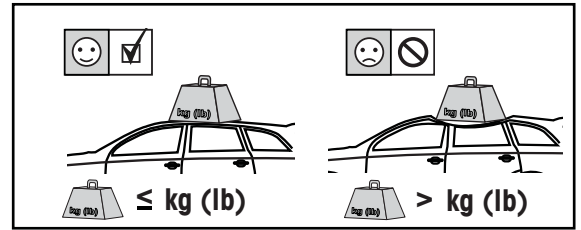
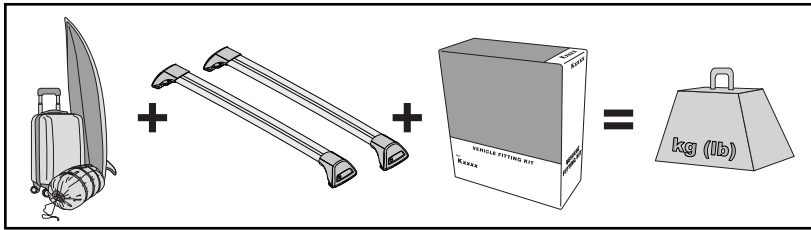
Fitting Kit




REQUIRED • ERFORDERLICH • REQUERIDOS • OBLIGATOIRE • NØDVENDIG • NECESSÁRIO • ОБЯЗАТЕЛЬНО • OBBLIGATORIO
POTRZEBY • NEVYHNUTELNÉ • NEVYHNUTNÉ • NODIG • NÖDVÄNDIG • PÅKRÆVET • ПОТРІБНА • EDELLYTETÄÄN

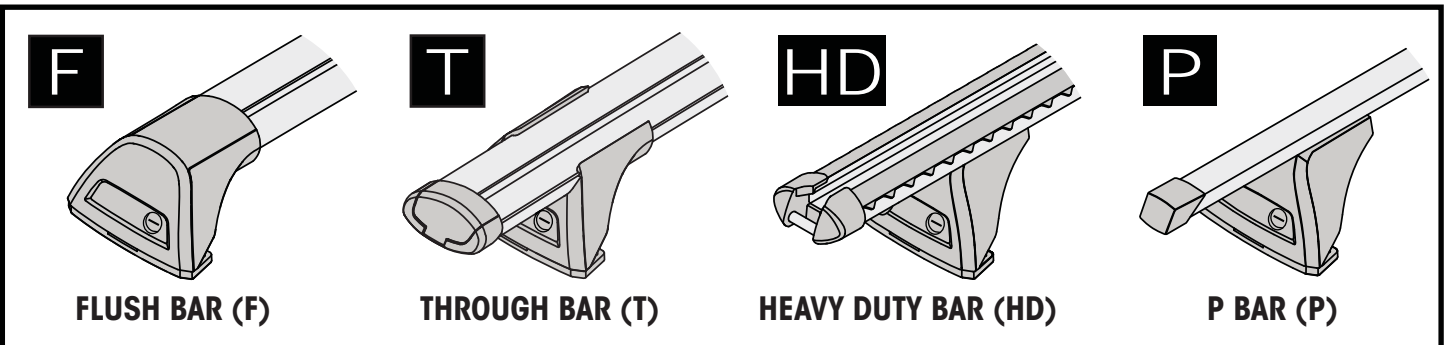
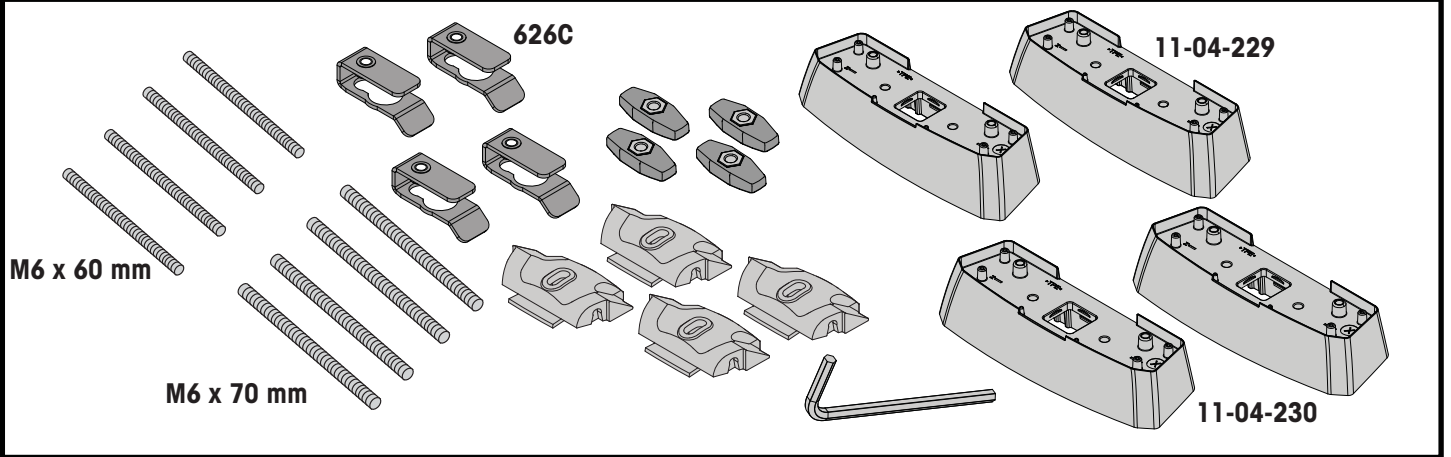


**MAXIMUM kg (lb) • MAXIMUM kg • MÁXIMO kg • MAXIMUM kg • MAKSIMALT kg • MÁXIMO kg
 МАКСИМУМ кг • MASSIMO kg • MAKSYMALNEJ kg • MAXIMÁLNÍ kg • MAXIMÁLNE kg
 MAXIMUM kg • MAXIMAL kg • MAKSIMAL kg • МАКСИМАЛЬНА kg • ENIMMÄISMÄÄRÄ kg**

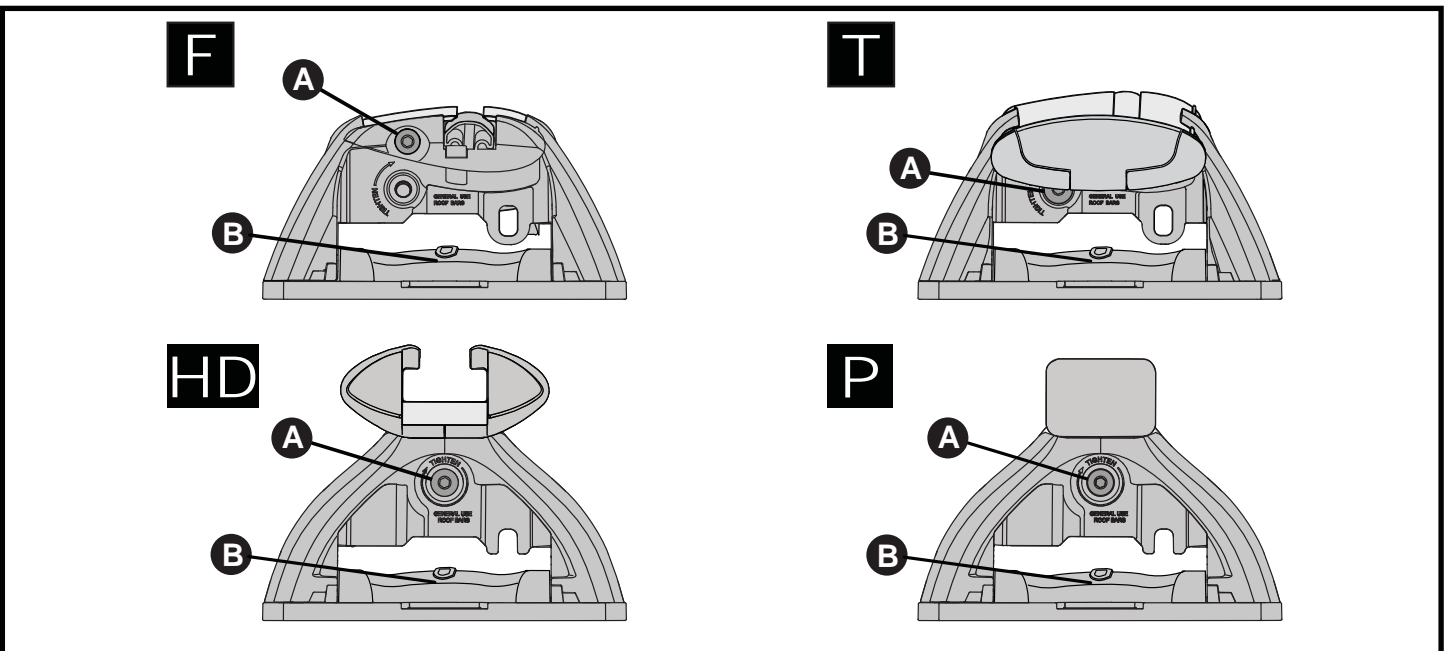
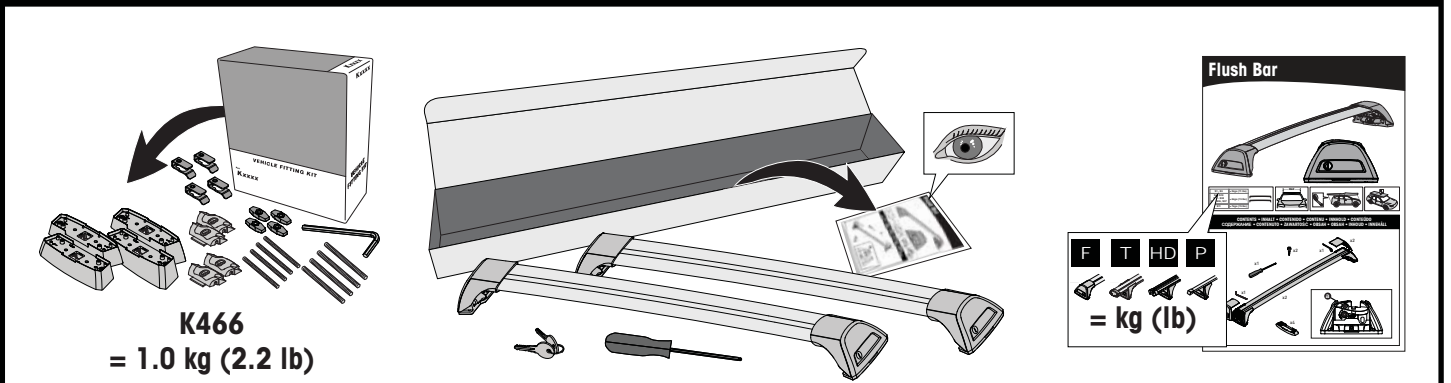


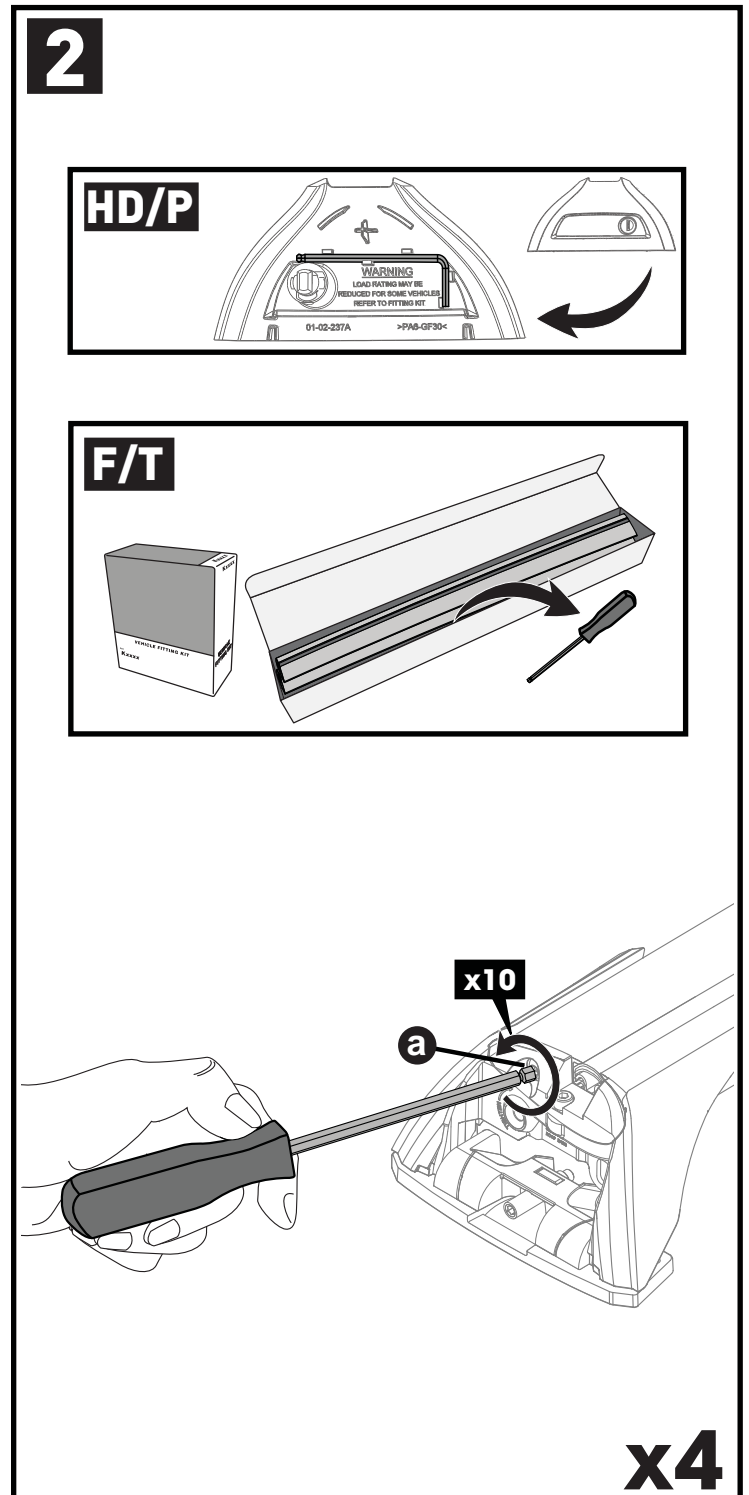
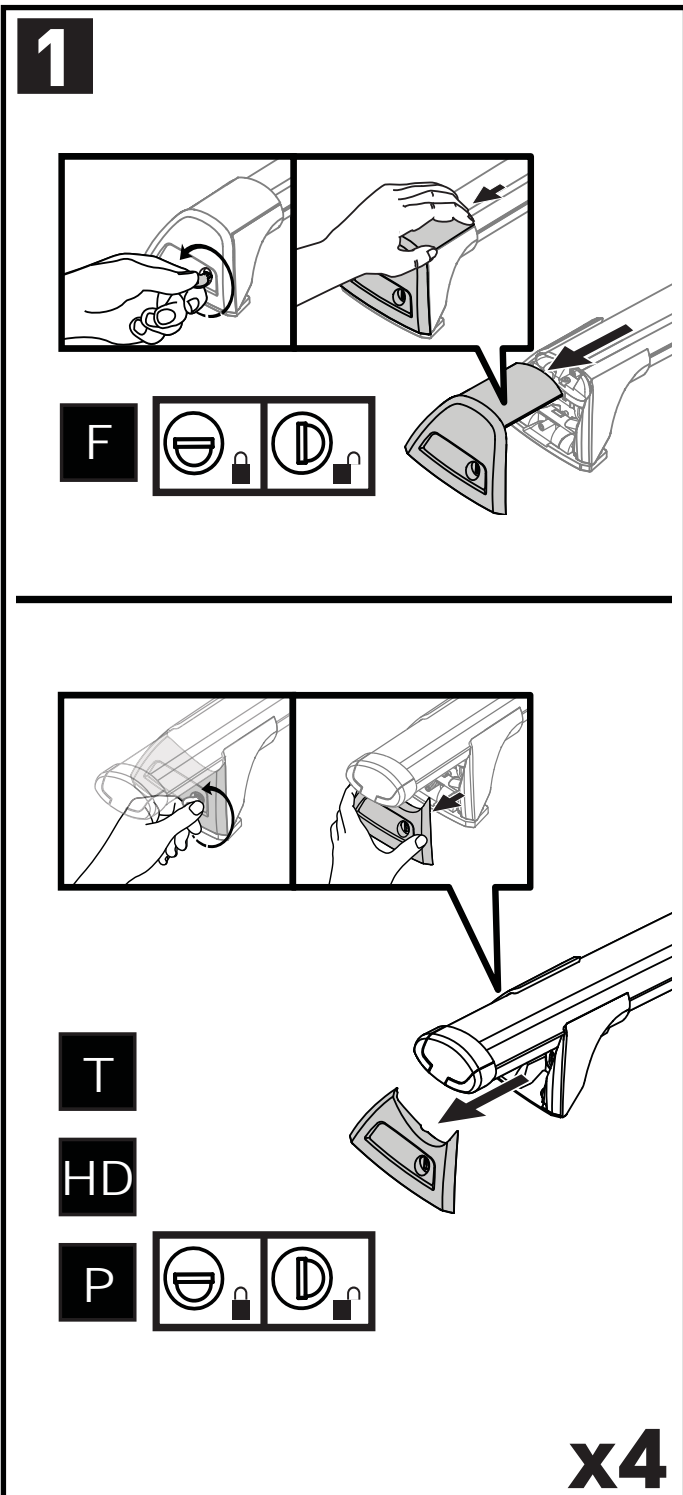
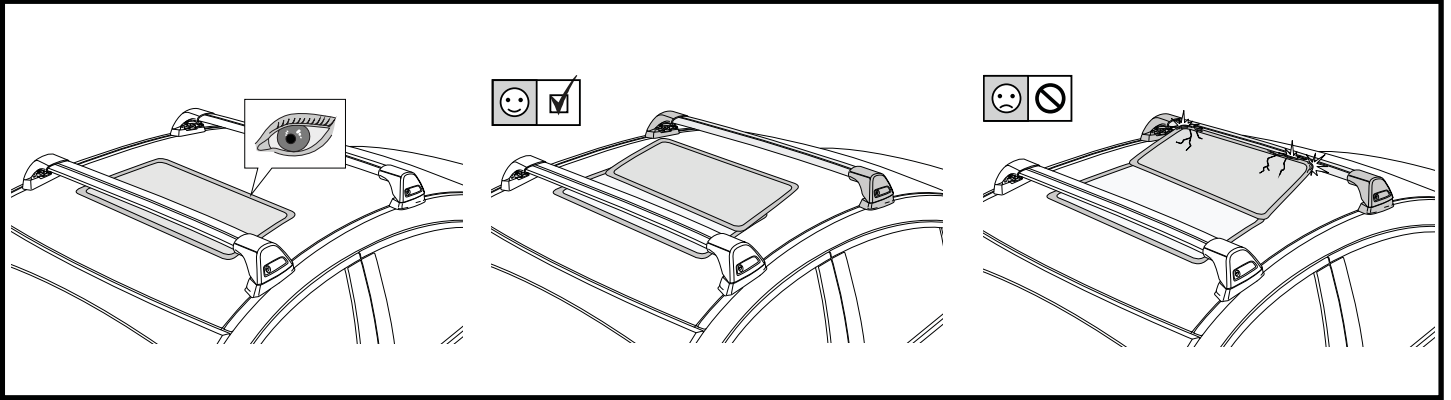
		F  T  P 	HD 
Peugeot 207, 3dr Hatch 05-12	ZA	75 kg (165 lb)	75 kg (165 lb)
Peugeot 207, 3dr Hatch 06-12	CN, EU	75 kg (165 lb)	75 kg (165 lb)
Peugeot 207, 3dr Hatch 07-12	AU, NZ	75 kg (165 lb)	75 kg (165 lb)
Peugeot 207, 5dr Hatch 06-12	EU	75 kg (165 lb)	75 kg (165 lb)
Peugeot 207, 5dr Hatch 07-12	AU, NZ	75 kg (165 lb)	75 kg (165 lb)
Peugeot 3008, 5dr SUV 09-15	EU	75 kg (165 lb)	75 kg (165 lb)
Peugeot 3008, 5dr SUV 10-Dec 15	ZA	75 kg (165 lb)	75 kg (165 lb)
Peugeot 3008, 5dr SUV 10-16	AU, NZ	75 kg (165 lb)	75 kg (165 lb)
Peugeot 3008, 5dr SUV 11-11	CN	75 kg (165 lb)	75 kg (165 lb)
Peugeot 308, 5dr Hatch 07+	AU, NZ	75 kg (165 lb)	75 kg (165 lb)
Peugeot 308, 5dr Hatch 07-13	CN	75 kg (165 lb)	75 kg (165 lb)
Peugeot 308, 5dr Hatch 08-13	ZA	75 kg (165 lb)	75 kg (165 lb)
Peugeot 407, 4dr Sedan 04-10	AU, CN, EU, NZ	75 kg (165 lb)	75 kg (165 lb)
Peugeot 5008, 5dr MPV 09-17	CN, EU	75 kg (165 lb)	75 kg (165 lb)

**CONTENTS • INHALT • CONTENIDO • CONTENU • INNHOLD • CONTEÚDO • СОДЕРЖАНИЕ • CONTENUTO
ZAWARTOŚĆ • OBSAH • OBSAH • INHOUD • INNEHÅLL • INDHOLD • ЗМІСТ • SISÄLLYS**



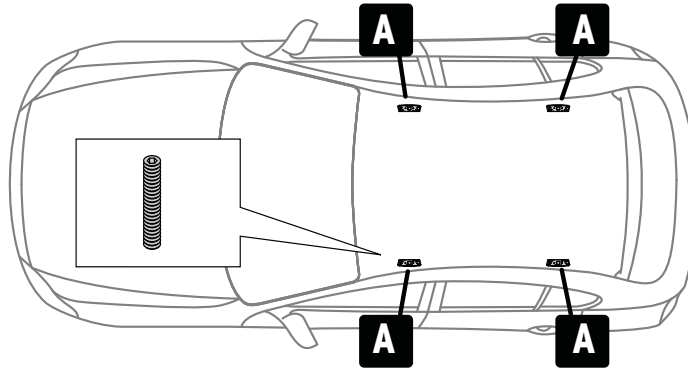
**ATTENTION • ACHTUNG • ATENCIÓN • ATTENTION • OPPMERKSOMHET • ATENÇÃO • ВНИМАНИЕ • ATTENZIONE
UWAGA • UPOZORNĚNÍ • UPOZORNENIE • LET OP • UPPMÄRKSAMHET • OPMÆRKSOMHED • УВАГА • HUOMIO**





207 ONLY • 207 NUR • 207 SOLAMENTE • 207 SEULEMENT • 207 BARE • 207 SOMENTE • 207 ТОЛЬКО • SOLO 207 •
 207 TYLKO • 207 POUZE • 207 IBA • 207 ALLEEN • 207 BARA • KUN 207 • 207 ТІЛЬКИ • VAIN 207

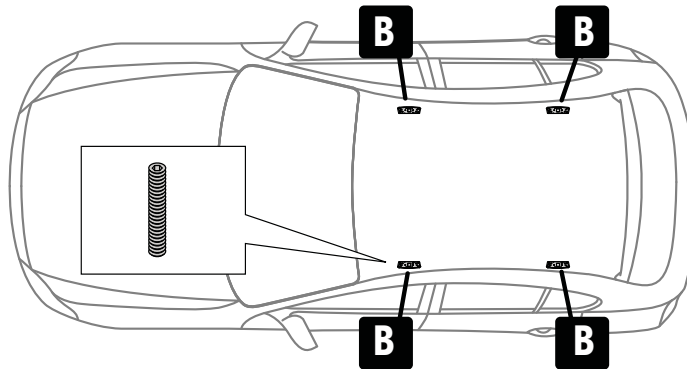
6



x4

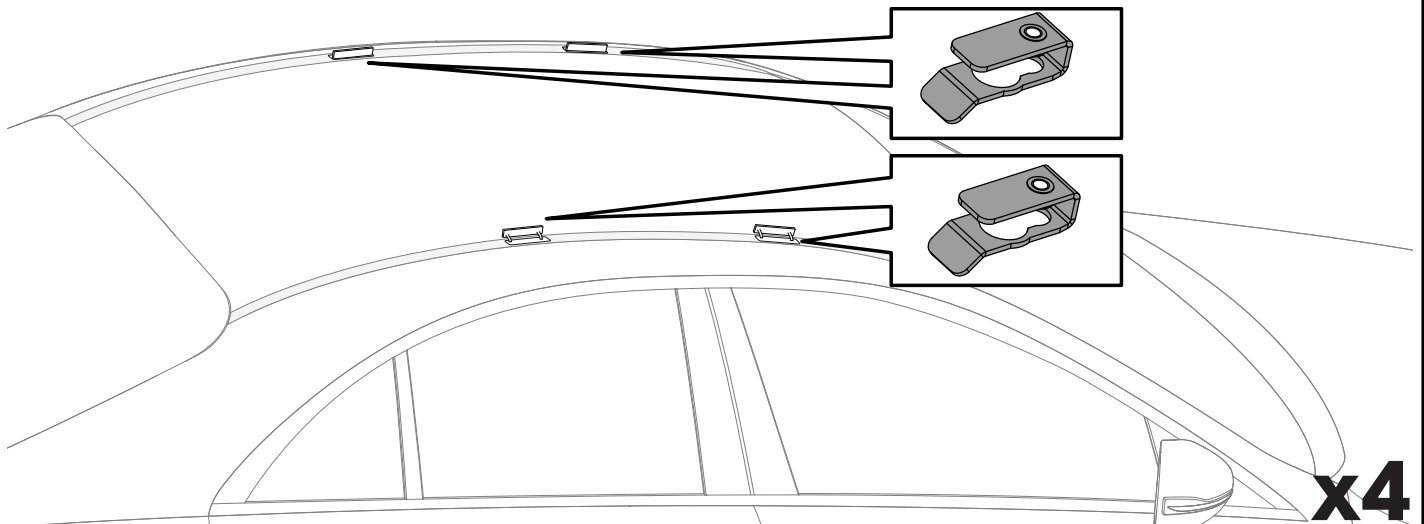
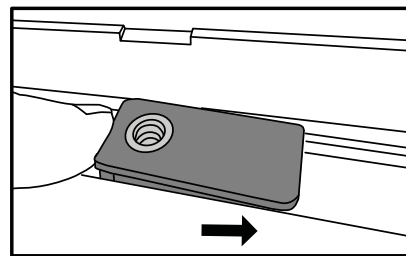
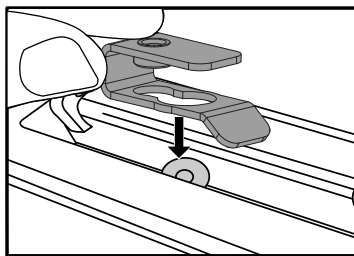
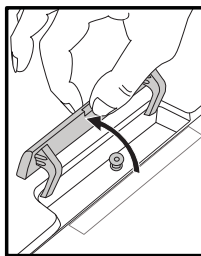
308, 407, 3008, 5008 ONLY • 308, 407, 3008, 5008 NUR • 308, 407, 3008, 5008 SOLAMENTE • 308, 407, 3008, 5008
 SEULEMENT • 308, 407, 3008, 5008 BARE • 308, 407, 3008, 5008 SOMENTE • 308, 407, 3008, 5008 ТОЛЬКО • SOLO 308,
 407, 3008, 5008 • 308, 407, 3008, 5008 • 308, 407, 3008, 5008 POUZE • 308, 407, 3008, 5008 IBA • 308, 407, 3008, 5008
 ALLEEN • 308, 407, 3008, 5008 BARA • KUN 308, 407, 3008, 5008 • 308, 407, 3008, 5008 ТІЛЬКИ • VAIN 308, 407, 3008, 5008

6



x4

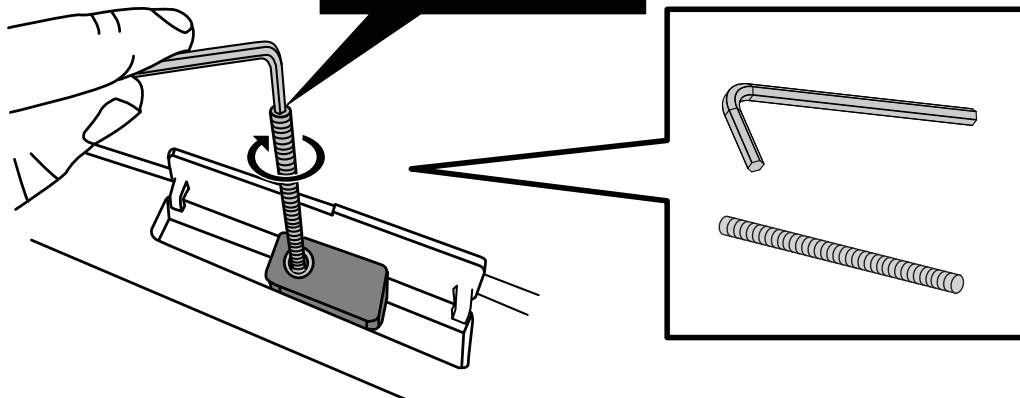
7



x4

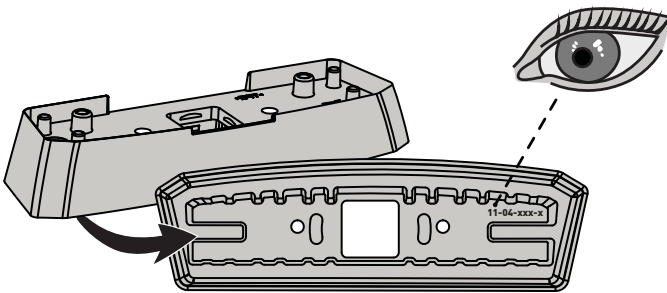
8

2.5 Nm
(22 lb-in)



x4

9



FR = 11-04-229

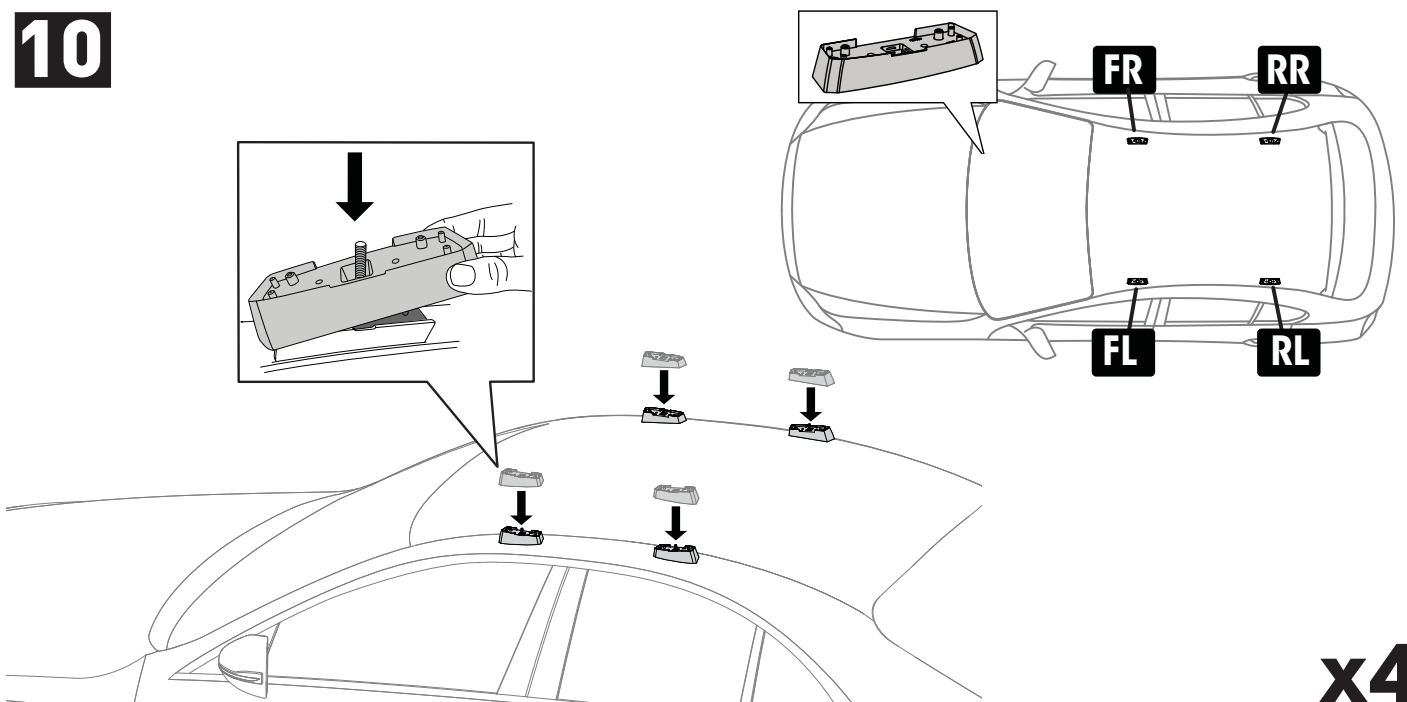
FL = 11-04-230

RR = 11-04-230

RL = 11-04-229

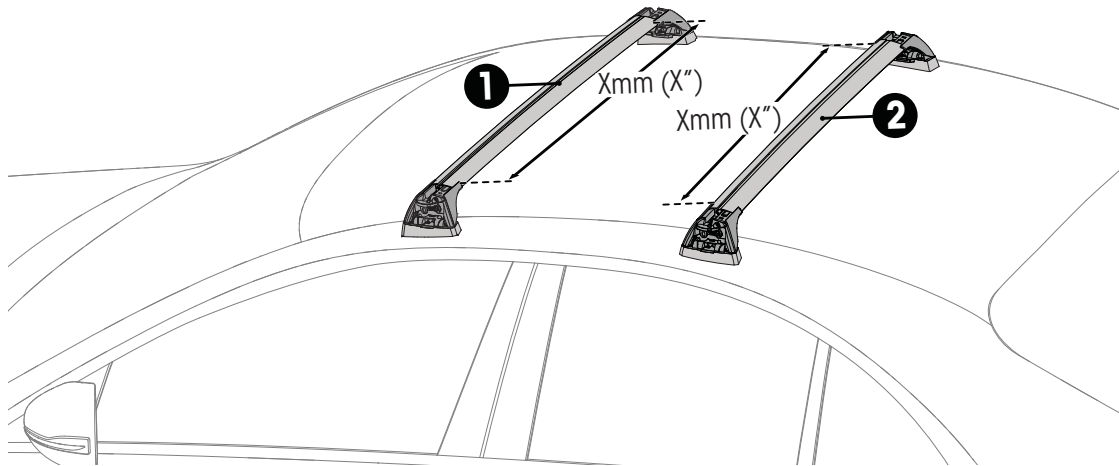
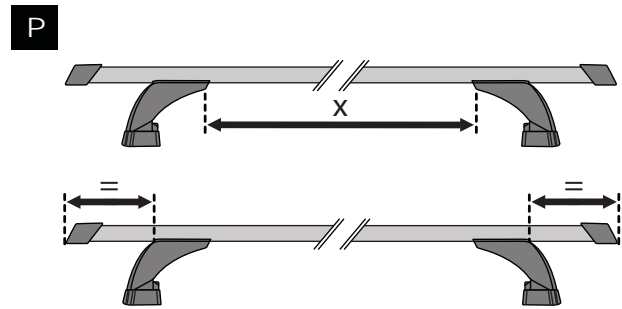
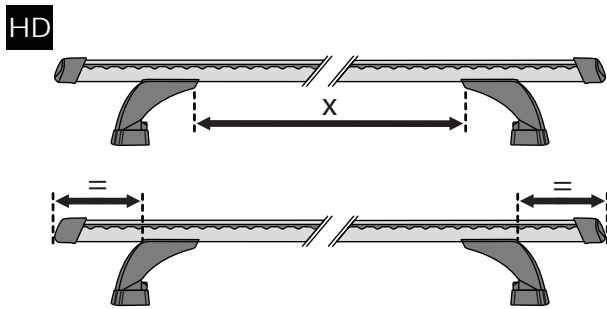
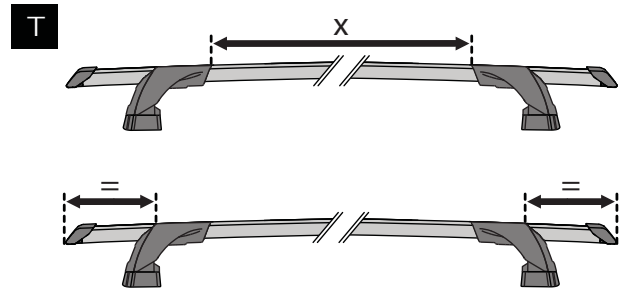
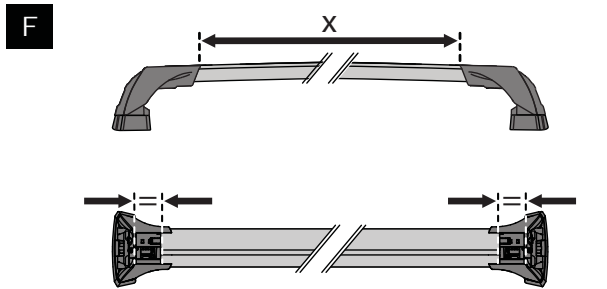
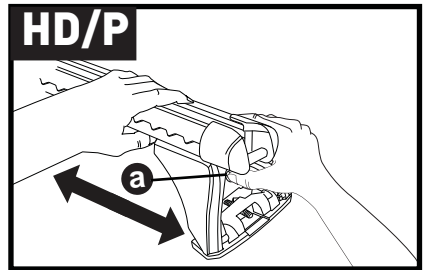
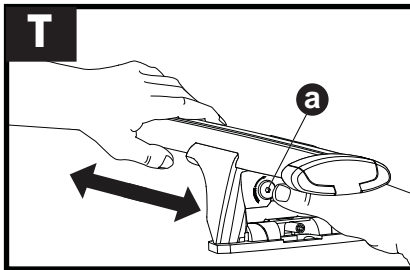
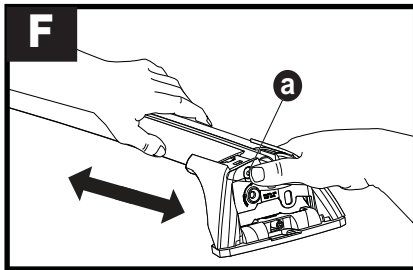
PLACEMENT • PLATZIERUNG • COLOCACIÓN • MONTAGE • PLASSERING • COLOCAÇÃO • РАЗМЕЩЕНИЕ • MONTAGGIO
UMIESZCZENIE • UMÍSTĚNÍ • UMIESTNENIE • PLAATSING • PLACERING • PLACERING • РОЗМІЩЕННЯ • SIJOITTA



10

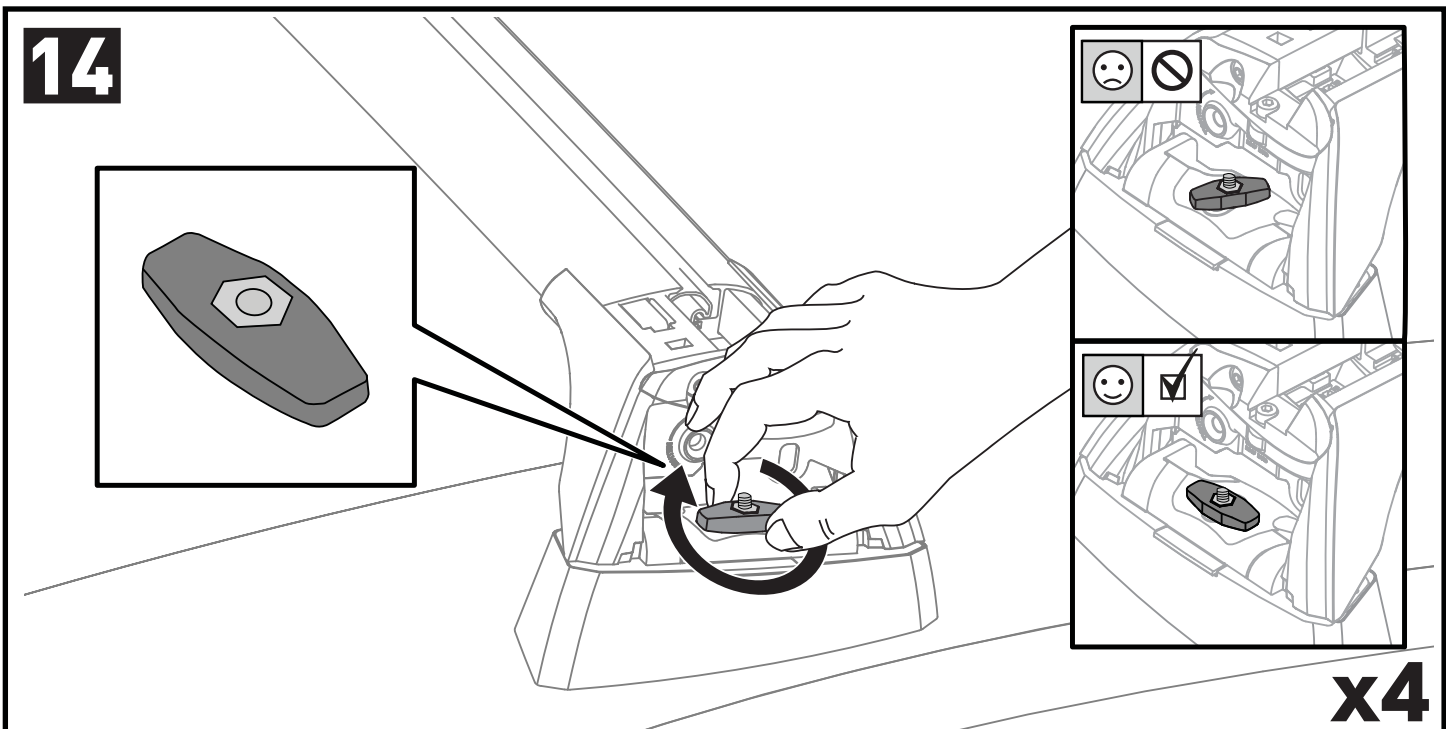
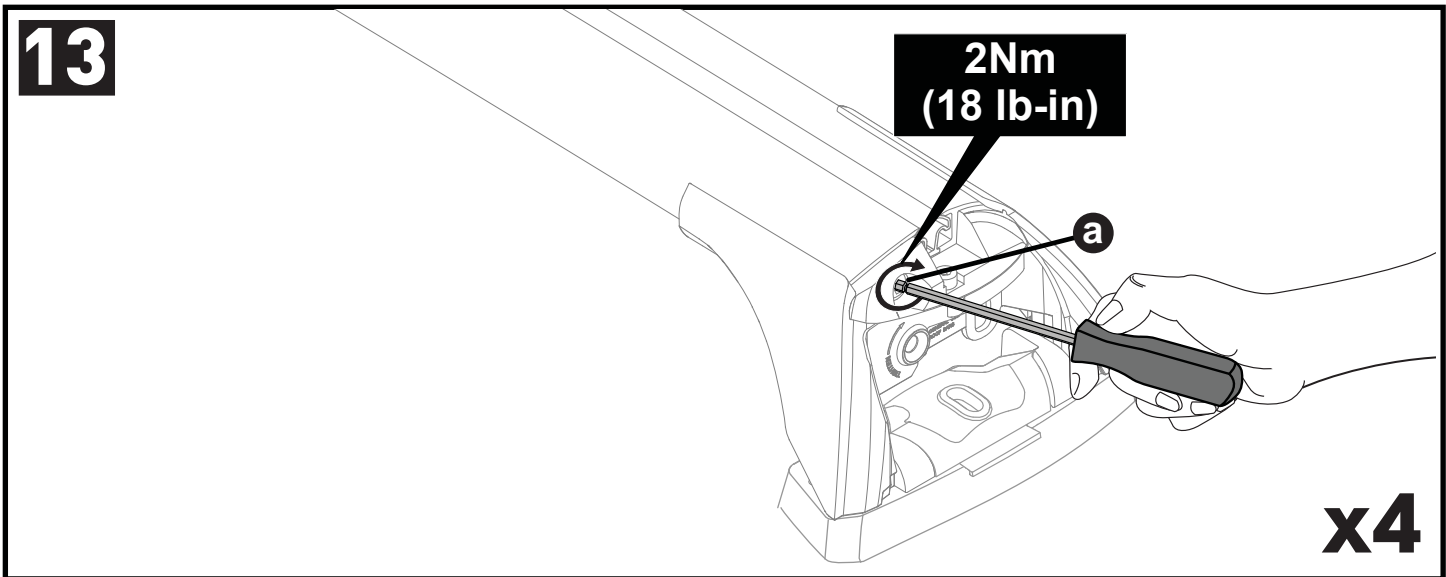
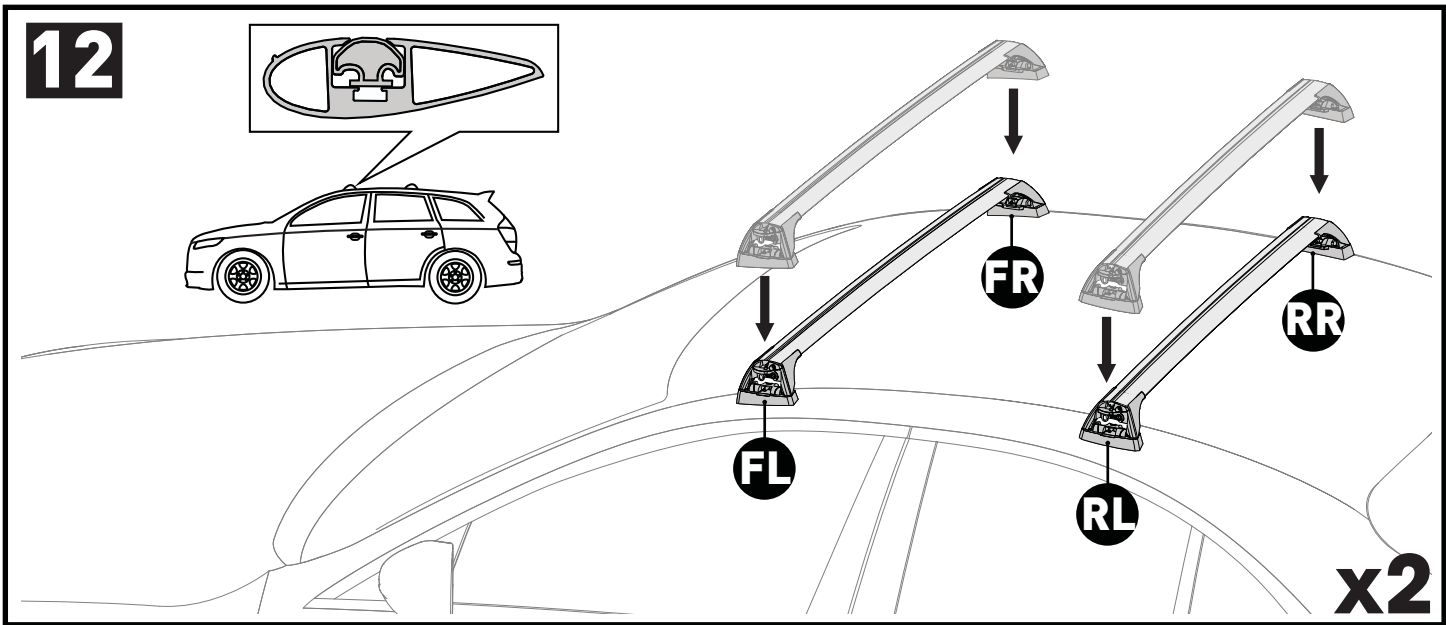


x4

11



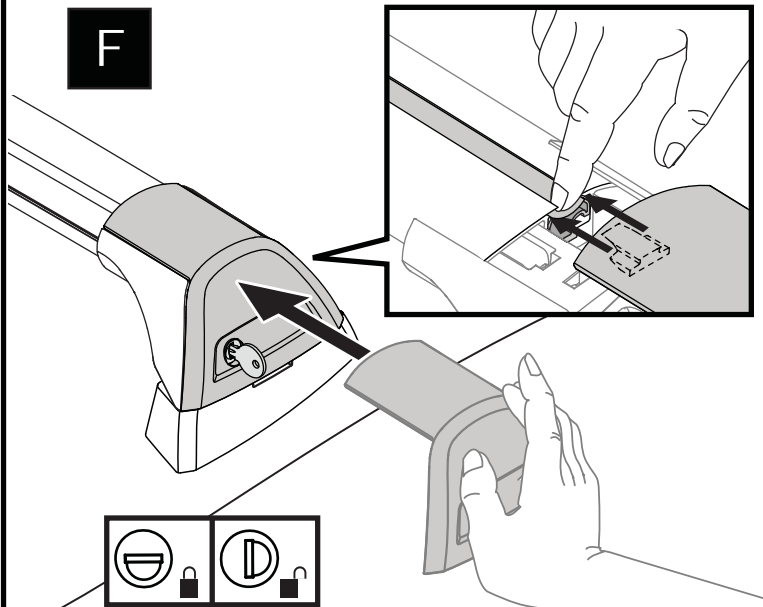
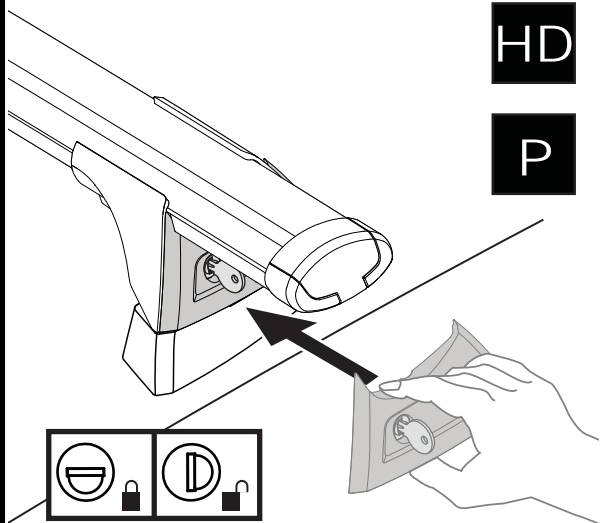
		1	2
Peugeot 207, 3dr Hatch 05-12	ZA	X = 788 mm (31")	X = 734 mm (28 7/8")
Peugeot 207, 3dr Hatch 06-12	CN, EU	X = 788 mm (31")	X = 734 mm (28 7/8")
Peugeot 207, 3dr Hatch 07-12	AU, NZ	X = 788 mm (31")	X = 734 mm (28 7/8")
Peugeot 207, 5dr Hatch 06-12	EU	X = 795 mm (31 1/4")	X = 735 mm (28 7/8")
Peugeot 207, 5dr Hatch 07-12	AU, NZ	X = 795 mm (31 1/4")	X = 735 mm (28 7/8")
Peugeot 3008, 5dr SUV 09-15	EU	X = 1005 mm (39 5/8")	X = 940 mm (37")
Peugeot 3008, 5dr SUV 10-Dec 15	ZA	X = 1005 mm (39 5/8")	X = 940 mm (37")
Peugeot 3008, 5dr SUV 10-16	AU, NZ	X = 1005 mm (39 5/8")	X = 940 mm (37")
Peugeot 3008, 5dr SUV 11-11	CN	X = 1005 mm (39 5/8")	X = 940 mm (37")
Peugeot 308, 5dr Hatch 07+	AU, NZ	X = 894 mm (35 1/4")	X = 816 mm (32 1/8")
Peugeot 308, 5dr Hatch 07-13	CN	X = 894 mm (35 1/4")	X = 816 mm (32 1/8")
Peugeot 308, 5dr Hatch 08-13	ZA	X = 894 mm (35 1/4")	X = 816 mm (32 1/8")
Peugeot 407, 4dr Sedan 04-10	AU, CN, EU, NZ	X = 805 mm (31 3/4")	X = 795 mm (31 1/4")
Peugeot 5008, 5dr MPV 09-17	CN, EU	X = 990 mm (39")	X = 945 mm (37 1/4")



15

T
HD
P

F



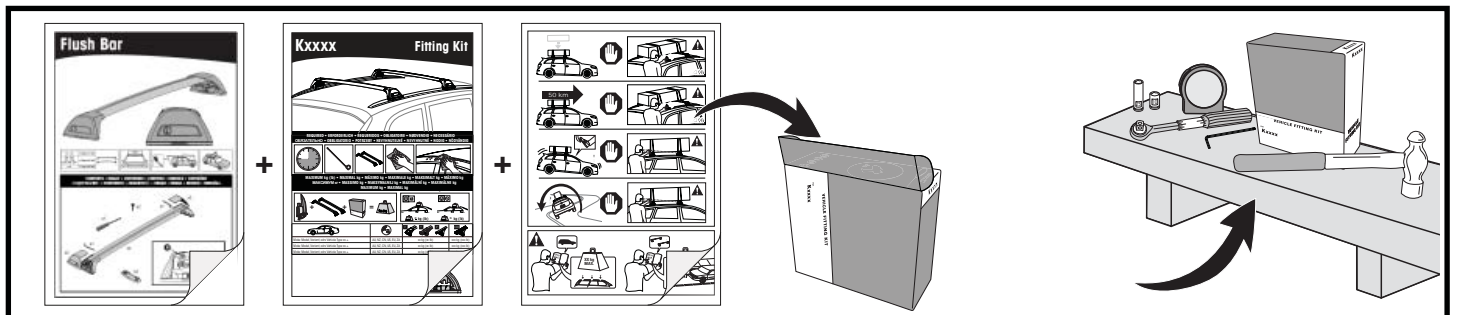
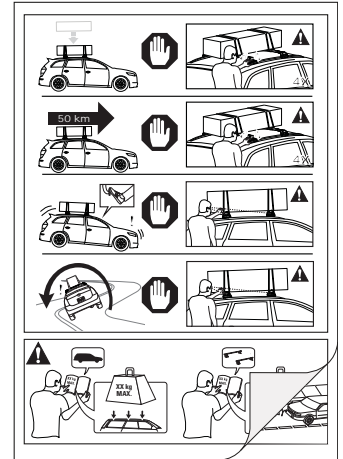
x4

16



x4

- EN** Please read safety and warranty booklet included with this product prior to use. For more information visit your local dealer.
- DE** Bitte lesen und beachten Sie die beiliegende Montageanleitung, Sicherheitshinweise und Garantiebedingungen bevor Sie das Produkt montieren/benutzen. Für weitere Informationen kontaktieren Sie bitte Ihren Händler.
- ES** Por favor, lea folleto de seguridad y garantía que se incluye con este producto antes de su uso . Para obtener más información, visite a su distribuidor local.
- FR** Veuillez lire attentivement le manuel de sécurité et de garantie avant utilisation. Pour plus d'informations, visitez votre concessionnaire local.
- NO** Vennligst les hefte om sikkerhet og garanti som er vedlagt dette produkt før det tas i bruk. For mer informasjon ta kontakt med din forhandler.
- PT** Por favor leia o manual de segurança e garantia incluído, antes de utilizar o produto. Para mais informações visite o seu revendedor local.
- RU** Пожалуйста, ознакомьтесь с инструкцией перед тем, как использовать товар. Для получения более подробной информации обратитесь к местному дилеру.
- IT** Si prega di leggere il libretto di sicurezza e garanzia incluso nel prodotto prima dell'uso. Per maggiori informazioni visita il rivenditore locale.
- PL** Proszę zapoznać się z warunkami gwarancji i bezpieczeństwa przed użyciem produktu. W celu uzyskania dodatkowych informacji proszę kontaktować się z najbliższym autoryzowanym punktem sprzedaży.
- CS** Před použitím si prosím přečtete přiložené informace o bezpečnosti a záručních podmínkách. Pro více informací navštivte nejbližšího dealera.
- SK** Pred použitím si prosím prečítajte priložené informácie o bezpečnosti a záručných podmienkach. Pre viac informácií navštívte najbližšieho dílera.
- NL** A.U.B. bijgesloten garantie- en veiligheidsinstructies grondig lezen voor gebruik van dit product. Voor meer informatie graag contact opnemen met uw dealer.
- SV** Var snäll och läs igenom säkerhets- och garantihäftet som medföljer produkten före användning. För mer information besök din lokala återförsäljare.
- DK** Læs venligst sikkerheds- og garantibogsholderen, der følger med dette produkt, inden brug. For mere information besøg din lokale forhandler.
- UA** Будь ласка, ознайомтеся з бронею безпеки та гарантії, включені до цього продукту перед використанням. Для отримання додаткової інформації відвідайте місцевого дилера.
- FI** Lue tämän tuotteen mukana toimitetut turvallisuus- ja takuu huoltopalvelut ennen käyttöä. Lisätietoja saat paikalliselta jälleenmyyjältä.



Yakima Australia Pty Ltd
 17 Hinkler Court, Brendale
 QLD 4500, Australia
 1800 143 548
www.prorack.com.au
www.whispbar.com.au

Yakima Europe Coöperatief U.A.
 Twentehaven 7, 3433
 PT Nieuwegein, The Netherlands
 +31 2080 81425
www.prorackeurope.eu
www.yakima.eu

Yakima Products, Inc.
 4101 Kruse Way
 Lake Oswego, OR. 97035 USA
 888 925 4621
www.yakima.com

WORKS WITH:
YAKIMA
 WHISPBAR
PRORACK